

# mistral®

## Retro Ice Maker

### 12kg Black



## Instruction Manual

Model: MIM12BLK

### TABLE OF CONTENTS

**Before getting started** ..... 1

**Specification** ..... 1

**Important safety instruction**

**Important safety tips** ..... 1

**Name of the parts** ..... 4

**Operating procedures & maintenance**

**Unpacking your ice maker** ..... 5

**Connecting your ice maker** ..... 5

**How to clean** ..... 6

**Care and maintenance** ..... 6

**Using your ice maker** ..... 7

**Troubleshooting** ..... 8

### BEFORE GETTING STARTED

1. Before connecting the appliance to the power supply, let the unit stand upright for 1 hour, which will reduce the possibility of the cooling system malfunctioning due to improper handling.
2. Clean your unit thoroughly before putting into use. (See "How to Clean")
3. Use the parts diagram on page 4 to insure proper positioning of internal components.

### SPECIFICATION

Product Description	Tabletop Ice Maker		
Model No.	MIM12BLK		
Color	Black		
Unit Dimensions (mm)	Width	Height	Depth
	227	313	334

### IMPORTANT SAFETY INSTRUCTION

#### IMPORTANT SAFETY TIPS

When using electrical appliances, basic safety precautions should be followed to reduce the risk of fire, electric shock, and injury to persons or property. Read all instructions before using any appliance.

1

1. Do not operate this or any other appliance with a damaged cord.
2. Connect directly to Domestic Power Outlets only. No other appliance should be plugged into the same outlet. Be sure that the plug is fully inserted into the GPO socket.
3. Do not run cord over carpeting or other heat insulators. Do not cover the cord. Keep cord away from traffic areas, and do not submerge in water.
4. Unplug the ice maker before cleaning or making repairs.
5. Exercise caution and use reasonable supervision when appliance is used near children.
6. Do not clean your ice maker with flammable fluids. The fumes can create a fire hazard or explosion.
7. Do not tip over.
8. If the ice maker is brought indoors from outdoors during the wintertime, give it a few hours to adjust to room temperature before plugging it in.
9. If power cord is damaged, immediately stop using the appliance, unplug appliance from the mains power supply. If changing the damaged power cord this must be and can only be safely done so by the manufacturer, its service agent or qualified electrical technician in order to avoid any potential safety hazards.

WARNING: When positioning the appliance, ensure the supply cord is not trapped or damaged. WARNING: Only plug appliance directly into domestic power outlet, do not use with power boards, double adapters or extension cords.

Units of physical quantities and their symbols according to international standardized system:

Symbol ISO 7010 W021

Warning: risk of fire / flammable materials .



2

### IMPORTANT SAFETY TIPS

This appliance is not intended for use by persons (including children) with reduced physical, sensory or mental capabilities, or lack of experience and knowledge, unless they have been given supervision or instruction concerning use of the appliance by a person responsible for their safety.

1. Children should be supervised to ensure that they do not play with the appliance.
2. Do not use extension cords, powerboards or adaptors. Plug directly into GPO only.
3. If the supply cord is damaged, it must be replaced by the manufacturer, its service qualified person in order to avoid hazard.
4. Do not store explosive substances such as aerosol cans with a flammable propellant in this appliance.

- WARNING: Keep ventilation openings, in the appliance enclosure or in the built-in structure, clear of obstruction.

- WARNING: Do not use mechanical devices or other means to accelerate the defrosting process, other than those recommended by the manufacturer.

- WARNING: Do not damage the refrigerant circuit.

- WARNING: Do not use electrical appliances inside the food storage compartments of the appliance, unless they are of the type recommended by the manufacturer.

- WARNING Ice-Maker shall only use water.

This appliance is intended to be used in household and similar applications such as:

- Staff kitchen areas in shops, offices and other working environments;
- Farm houses and by clients in hotels, motels and other residential type environments;
- Bed and breakfast type environments;
- Catering and similar non-retail applications

3

### PARTS & FUNCTION DESCRIPTION

1. Cover: See through window to allow interior visibility.
2. Control panel: Easy to use, visible functions touch display

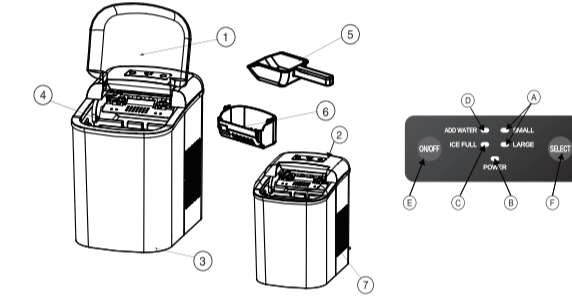
setting.

- A) Selected ice size: small or large.
- B) Power indicator.
- C) Ice Compartment Full Indicator
- D) Water Level Indicator.
- E) Button to turn on/off the unit.
- F) Button to select ice cube size.

3. Water drain cap: At front underside of the unit.
4. Ice full sensor.
5. Ice scoop.
6. Ice basket.
7. Air outlet.

8. MAXIMUM WATER LEVEL: (Not shown on the below unit image.)

Remove the ice basket, you can see the water level mark.



4

### OPERATING PROCEDURES & MAINTENANCE

#### UNPACKING YOUR ICE MAKER

1. Remove all exterior and interior packaging. Check that ice basket and ice scoop is included. If any part or accessory is missing, please contact our customer service.
2. Clean the interior with lukewarm water and a soft cloth. Remove the ice basket and wash it in warm water.
3. Find a location for your ice maker that is protected from direct sunlight and other sources of heat (i.e.: stove, furnace, radiator). Place the ice maker on a level surface. Make sure that there is at least 15cm of space between the back and sides of your ice maker and walls.
4. Allow one hour for the refrigerant fluid to settle before plugging in the unit.
5. The appliance must be positioned so that the plug is accessible.

#### CONNECTING YOUR ICE MAKER

**⚠ DANGER** Improper use of the grounded plug can result in the risk of electrical shock. If the power cord is damaged please call our customer service at 1300 373 199.

1. This unit should be properly grounded for your safety. The power cord of this appliance is equipped with an earthed plug which connects with earthed wall outlets to minimize the possibility of electric shock.
2. Plug your appliance into a Domestic Power Outlet. Do not under any circumstances, cut or remove the third (ground) prong from the power cord. Any questions concerning power and/or grounding should be directed toward a certified electrician.
3. This appliance requires a standard 220-240 volt, 50Hz electrical Domestic Power Outlet.

5

Before using your ice maker, it is strongly recommended to clean it thoroughly.

The ice maker is not designed to be installed in an outside area such as a garage or a porch. Ambient temperatures of below 50°F or above 100°F will hinder the performance of the appliance.

#### HOW TO CLEAN

Remove the ice basket.

1. Remove the drain plug from the front underside to drain out the water.
2. Clean the interior with diluted detergent, warm water and a soft cloth.
3. The outside of the ice maker should be cleaned regularly with a mild detergent solution and warm water.
4. Dry the interior and exterior with a soft cloth.
5. Insert the drain plug once cleaning is complete.
6. When the machine is not in use, remove water drain cap.

#### CARE AND MAINTENANCE

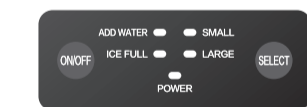
1. The ice maker should be cleaned on a regular basis. (See:"HOW TO CLEAN")
2. It is necessary to have adequate ventilation space around the ice maker in order to sustain proper performance, dissipation of heat, maintain efficiency, and low power consumption. Clearance of minimum 15cm should be maintained at the rear and sides of the unit and 20cm at the top of the unit.
3. To attain proper performance, be sure to plug the appliance into a properly grounded 220-240/50 Hz outlet.

6

4. Do not modify the power cord under any circumstances to allow the unit to be plugged into a non-grounded outlet. To avoid heat damage to the power cord, please ensure that it does not come in proximity or in direct contact with the compressor of the ice maker.
5. Please avoid installing the ice maker in a location where the appliance will come in contact with water or moisture to minimize rusting of metal parts.
6. The ice maker should not be installed near any heat source or in a location where it will come in direct contact with the sunlight.

#### USING YOUR ICE MAKER

1. Clean your ice maker thoroughly.



2. Open the cover, remove the ice basket and pour drinkable water (preferably purified water or distilled water) into tank.
3. Plug in the unit and the "POWER" indicator light will blink.
4. Press "ON/OFF" on the control panel to begin the ice making cycle. The "POWER" indicator light will illuminate.
5. Select the size of the ice cube by pressing the "SELECT" button. If ambient temperature is below 16C it is recommended to select small size to avoid ice sticking together.

7

6. While the ice-maker is operating, check water level periodically. If water pump can't inject water, the ice maker will stop automatically, and the "ADD WATER" indicator will illuminate. Press the "ON/OFF" button, fill water up to the level mark and press "ON/OFF" again.Allow 3 minutes for the refrigerant to settle before restarting.
7. The ice maker automatically stops working when the ice basket is full and the "ICE FULL" indicator will be illuminated. Warning: Direct sunlight or sunlight reflection may cause infrared sensor malfunction. If the unit does not stop, even ice cubes can obstruct sensor, move the unit where there is no sunlight.
8. Change water in the water reservoir every 24 hours to ensure a reasonable hygiene level. If unit is not in use, drain all water in the tank reservoir.

#### TROUBLESHOOTING

PROBLEM	POSSIBLE CAUSE	SOLUTION
"ADD WATER" indicator is on.	shortage of water.	Stop the ice maker; fill water; and press "ON/OFF" button again to restart the unit.
"ICE FULL" indicator is on.	Ice basket is full.	Remove ice from ice basket.
No ice, but "ICE FULL" indicator is illuminated.	1. Ice-Full sensor (transmitter and receiver) is covered by the impurities contained in water or other pollutants. 2. Ice-Full sensor is malfunctioning.	Use a soft cloth dip into water to clean the Ice-Full sensor. After cleaning, to see if the ice maker resume working, otherwise, please consult a certified technician.

8

PROBLEM	POSSIBLE CAUSE	SOLUTION
"ICE FULL" indicator is on for 3 seconds and off for 3 seconds.	Ice shovel is stuck or the flip system is malfunctioning.	Check if the ice is blocking the ice shovel, otherwise, press "ON/OFF" button to turn off the ice maker and press it again to turn it on to see if it can make ice normally. If the "ICE FULL" indicator is still on for 3 seconds and off for 3 seconds, press "ON/OFF" button to turn off the machine and consult a certified technician.
Water is added, but "ADD WATER" indicator is illuminated and ice is not made.	Ice-Full sensor is malfunctioning.	Please consult a certified technician.
Ice cubes stick together.	Ice making cycle is too long.	Stop the ice maker, and restart when the ice blocks melt. Select the small ice size.
	Water temperature in inner tank is too low.	Change the water in the reservoir. Use water between 7-32C.
	Leaving ice in the appliance for an extended period of time may result in the appliance recycling the ice by melting it down and making a new batch.	Transfer ready-made ice to another container and store in a cooler or freezer to avoid recycling.

9

PROBLEM	POSSIBLE CAUSE	SOLUTION
The ice cubes are melting.	Leaving ice in the appliance for an extended period of time may result in the appliance recycling the ice by melting it down and making a new batch. The ice maker is not designed to store ice for very long. Melting ice is normal operation if ice is not used or moved to a cooler or freezer regularly.	After extended period transfer ready-made ice to another container and store in a cooler or freezer to avoid recycling.
Ice making cycle is normal but no ice is made.	Ambient temperature or water temperature in inner tank is too high.	Please operate the ice maker below ambient temperature of 32C and use cold water.
	Refrigerant liquid leakage.	Consult a qualified technician.
	Pipe in the cooling system is blocked.	Consult a qualified technician.

10



GSM Retail Australia Pty Ltd has a policy of continual improvement throughout the product range. As such the unit contents within may differ slightly from the unit illustrated on the pack.

MADE IN CHINA for GSM Retail Australia Pty Ltd.