



Robovac



Instruction Manual

Model: MRVAC500B

Important Safeguards

When using this electrical appliance, the following basic safety precautions should always be followed:

For Your Safety

- To protect against the risk of electric shock, DO NOT IMMERSE the main unit, adapter or cord in water or any other liquid.
- Please read these instructions before operating and retain these for future reference.
- Before connecting the product to the power supply, check that the voltage indicated on the product corresponds with the voltage in your home. If this is not the case, contact your local qualified technician and DO NOT use the product.
- If the supply cord or any part is damaged, cease use of this product immediately to avoid a hazard.
- Do not hang the power cord over the edge of table and do not let cord contact hot surfaces, including stovetop.
- This appliance is not intended for use by persons (including children) with reduced physical, sensory or mental capabilities, or lack of experience and knowledge, unless they have been given supervision or instruction concerning use of the appliance by a person responsible for their safety.
- Children should be supervised to ensure that they do not play with appliance.
- Only use the product indoors, do not use it outdoors.
- Before starting the product, make sure the dust bin filter is properly installed.
- Do not use this product in wet or moist environment (any environment with liquid), e.g bathroom or laundry.
- Before use, remove all unwanted obstructions that may impede safe operation of the product (remove all the fragile objects and cords, clothing, papers, loose cables, as well as making sure to lift curtains and drapes off the floor to avoid any possible accidents. In case that a loose cable is tangled with the product, the cable might move around with the product as it works and topple down the table, chairs, or cabinet and might cause hurt or property damage.)

- Do not sit on top of this product or place an object on the top of it. Beware of children or pets while the product is in operation.
- Do not allow this product to come in touch with cigarettes, lighters, matches or any other flammable materials/items.
- Never use the product to clean up combustible or highly volatile liquids such as gasoline.
- While the product is in operation, make sure all doors leading outside are closed.
- In case the product has malfunctioned or is damaged, please contact the consumer service helpline before attempting to repair.
- Before charging, check whether the adapter and outlet are properly connected.
- Use this product in temperature from 0°C to 40°C and do not place this product in high-temperature environment or under baking sunlight for a long time.

Warning

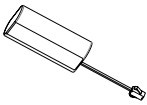
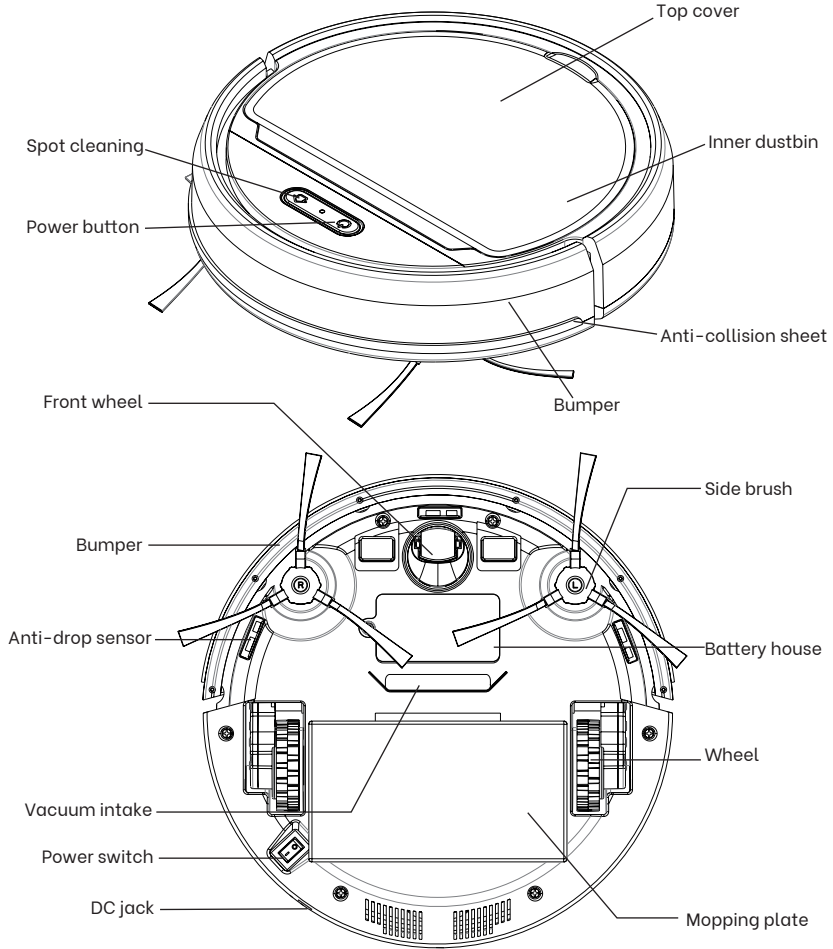
If the supply cord is damaged, the cord must be replaced by the manufacturer, its service agent or similarly qualified persons in order to avoid a hazard.

This product has not been designed for any uses other than those specified in this booklet.

Save These Instructions

THIS APPLIANCE IS DESIGNED FOR HOUSEHOLD USE ONLY

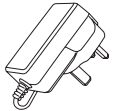
Features of Your Robovac



Battery x 1



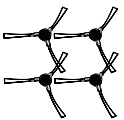
Dust bin x 1



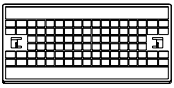
Adapter x 1



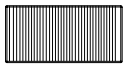
Mop cloth x 2



Side brush x2 pairs



Mopping plate x 1



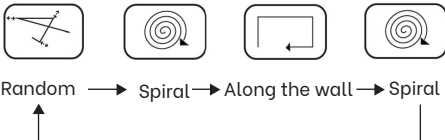
Filter x 2

Battery and Recharging Instructions

1. The battery is rechargeable, please use the voltage specified on the packaging. If you are not sure of the voltage current of your house, please check with your electricity provider. (Only use battery pack which is provided by the manufacturer, please check the polarity before installing the battery).
Battery pack: 7.4V 2000mAh
2. Only use the original battery and power adapter with the product for charging.
3. Charging adaptor is for indoors use only.
4. Do not recharge the product if the battery cord or plug is damaged.
5. Never touch the charger, plug or cable with damp hands.
6. Before cleaning the product, unplug the adaptor, switch Off the product and remove the battery.
7. Please remove the battery when it is not in use for a long time.
8. The battery must be removed from the product before it is scrapped.
9. The product must be disconnected from the power source and turn the power switch off when removing the battery. The battery is to be disposed of in accordance with your local council regulations.

PRODUCT FEATURES

This revolutionary Mini Robotic Vacuum Cleaner is equipped with functions suitable for cleaning up floor surfaces of home and office, such as wood, tile, and linoleum.

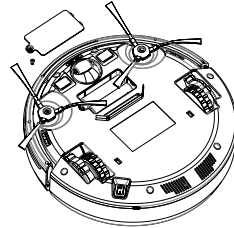


Indicator light:

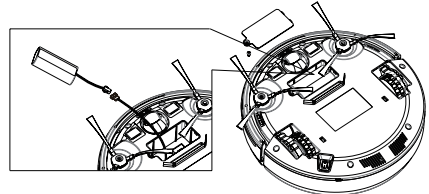
| No. | Indicator light | Status |
|-----|-------------------|---|
| 1 | OFF | 1.Not Powered On 2.Battery low condition |
| 2 | Red | 1.The product is lifted with power On. 2.Side brush or wheel are overloaded due to obstructions. 3. Stop mode |
| 3 | Green | 1.Battery is fully charged. |
| 4 | Flashing in red | 1.Battery is charging. 2.Battery low condition |
| 5 | Flashing in green | 1.The product is working. |

BATTERY INSTALLATION AND REMOVAL

1. Before installing or removing the battery, make sure to disconnect the product from the power source and turn the power switch off.
2. Open the battery cover after removing the screw.



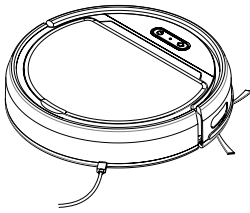
3. Connect the two connectors in the below drawing together, place the connectors with wires on the bottom of the compartment, insert the battery pack into the compartment, then put the battery cover back on and tighten the screw.



4. The battery pack can be removed after unscrewing the screw, removing the battery cover and disconnecting the connectors.

RECHARGING BATTERY

1. Before charging, make sure the battery is correctly installed.
2. The procedure of charging the product is as follows: Connect the adapter output plug into the DC jack of the product, then plug the adapter into a domestic power supply outlet. The blue indicator light will flash, indicating the product is charging.
3. After the product is fully charged, the indicator light turns green.
4. When the product runs out of power, the indicator light will turn red, which prompts the user to charge the product.
5. To ensure the best performance and life span of the battery, please charge the product for at least 2-2.5 hours continuously. After the product is fully charged, the indicator light will turn green. The product can be operated after 2-2.5 hours of charging.



Adapter Plug to DC jack

General Operation

Starting Operation

1. Place the product in a room with all unwanted obstacles removed, turn on the power switch and press the Power button. The product starts working.
2. During operation, if the product is lifted or is hanging, it will stop working and display a red indicator light. It will return to normal operation after being placed on the floor.
3. During operation, if the side brush or wheel is overloaded due to obstructions, the product will stop working and display a red indicator light. After removing any obstructions, place the product on the floor and press the Power button to begin operation.
4. After cleaning, press the Power button to stop the operation, then turn the Power switch to OFF.

NOTE: The power indicator light will flash green during operation.

5. When the product is out of battery power, there is a beep sound. The red indicator light will illuminate and the product will stop operating.

Note: The red indicator light will turn off automatically when leaving it for approx. 5 minutes.

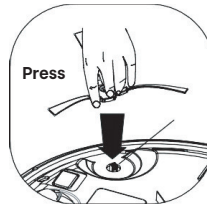
6. Spot cleaning: during operation, press the Spot Cleaning button, the vacuum will clean a small area in circle. Press this button again to stop the Spot cleaning.

NOTE: This product is not suitable for long-pile carpets.

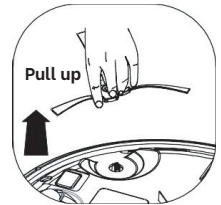
SIDE BRUSH INSTALLATION

Align the side brush up to the driving shaft on the product, press it downward to assembly it. To remove brushes simply pull them upwards.

Press to install



Pull upward to remove

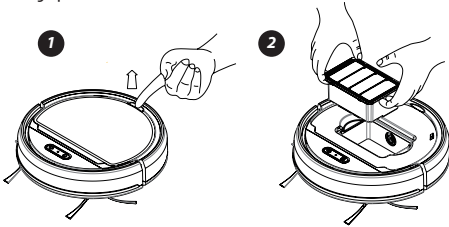


Note: The mop feature of the Robovac is suitable for dry, fine dust mopping of smooth laminate, vinyl or tiled floors, there is no requirement to wet the mopping pad. After each vacuum session, wash the mop pad and allow to dry for next cleaning session.

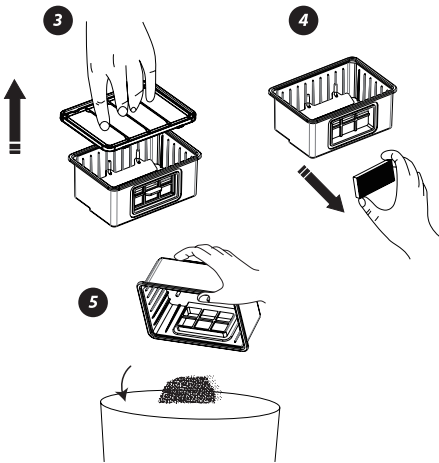
CLEANING AND MAINTENANCE

Cleaning Dust Bin

1. Open the upper cover by lifting the lid.
2. Put your finger into the dust bin groove and grip to take it out.

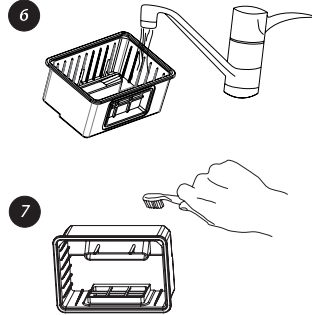


3. Open the dust bin lid.
4. Take out the inner filter.
5. Empty the dirt in the dust bin.



6. Rinse the dust bin with tap water. Do not wash it in washing machine or dishwashing machine.
7. Periodically clean the filter with a soft bristle brush.
8. Reinstall the filter and dustbin when they have completely dried and put back the cover.

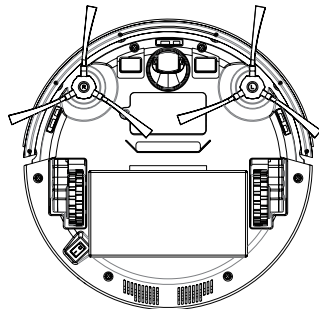
NOTE: Before putting back the dust bin, please make sure the PE pad (function as non-return valve) in the dust bin is well attached. Recheck the filter also before operating the product. Using product without filter might cause malfunction.



Cleaning Intake

After repeated use for some time, dirt and dust may accumulate around the air intake of the product. To ensure the best cleaning efficiency and constant airflow, the air intake should be cleaned periodically.

9. Disconnect from the external power sources.
10. Clean up the dirt and dust at the air intake.



Troubleshooting

| | Problem | Possible Cause | Solution |
|----------|--|--|--|
| 1 | Red LED stays On and the product does not work after pressing the power button | <ol style="list-style-type: none"> 1. Battery Low condition 2. The product is not making contact with the floor 3. The side brush or wheel is obstructed | <ol style="list-style-type: none"> 1. Recharge the battery 2. Reposition the product on the floor 3. Move the product to another flat area with no obstructions. |
| 2 | The product is on but can not collect dirt and hair | <ol style="list-style-type: none"> 1. The dust bin is full 2. The filter is not installed correctly | <ol style="list-style-type: none"> 1. Clean the dust bin 2. Re-install the filter correctly |
| 3 | The product is moving backwards after being started | <ol style="list-style-type: none"> 1. The product is on dark colored floor 2. Anti-drop sensor light is obstructed | <ol style="list-style-type: none"> 1. Put the product on light color floor. 2. Clean the anti-drop sensor light. |
| 4 | The side brushes misshape and is not functioning satisfactorily | The brushes are used for a long time | Rinse the brushes under hot water, the plastic has a memory and will restore to the original shape. |
| 5 | The product won't start | <ol style="list-style-type: none"> 1. Battery is not installed properly 2. Battery low 3. The product has been overloaded and engaged the overload protection. 4. The power switch is not turned on or the Power button is not pressed | <ol style="list-style-type: none"> 1. To install the battery correctly 2. To have the battery fully charged (turn off the cleaner first) 3. Allow the product to cool down and reset. Then restart it. 4. Turn the power switch on and press the Power button. |
| 6 | The product circles around only, cannot go straight | One of the wires of the wheels may have loosened | <ol style="list-style-type: none"> 1. Open the wheel cover and connect the loose wire properly 2. Have a service technician check the wheels. |

*If all solutions given above don't work for you, please take actions below:

1. Re-set the product by switching on the power button;
2. If re-set action doesn't work, the product maybe faulty, return to place of purchase for refund if within the warranty period.s

Note: Particular specification are subjected to change without prior notice.

Specifications

Construction Material:ABS, POM
Dust Bin Capacity:0.4L
Average Charge Time:2.5-3.0 Hours
Vacuum Operation Run-Time:90-100 Minutes
Battery Type:7.4V Li-ion, 2000mAh - 14.8Wh
Adapter input :...100-240V a.c. 50/60Hz 0.5A Max.
Adapter output:.....5V d.c. 2000mA

NOTE: As a result of continual improvements, the design and specifications of the product within may differ slightly from the unit illustrated on the packaging.

Notes

Notes

Warranty

This product is guaranteed to be free from defects in workmanship and materials, including parts and unless otherwise specified, for a period of 12 months from the date of purchase.

Defects that occur within the warranty period, under normal use and care, will be repaired, replaced or refunded at our discretion.

The benefits conferred by this warranty are in addition to all rights and remedies in respect of the product that the consumer has under the Competition and Consumer Act 2010 and similar state and territory laws.

Our goods come with guarantees that cannot be excluded under the Australian Consumer Law. You are entitled to a replacement or refund for a major failure and for compensation for any other reasonably foreseeable loss or damage. You are also entitled to have the goods repaired or replaced if the goods fail to be of acceptable quality and the failure does not amount to a major failure.

Proof of Purchase

This warranty is valid for the original purchase and is not transferable. Please keep your purchase docket, tax invoice or receipt as the best proof of purchase, and as proof of date on which the purchase was made.

Extent of Warranty

This warranty is limited to defects in workmanship and materials, including parts. All defective products or parts will be repaired, replaced or refunded. This warranty does not cover batteries or any other consumable items.

Normal wear and tear

This warranty does not cover normal wear to the products or parts.

Exclusions

This warranty does not cover:

- Any defects caused by an accident, misuse, abuse, improper installation or operation, lack of reasonable care, unauthorised modification, loss of parts, tampering or attempted repair by a person not authorised by the distributor.
- Any product that has not been installed, operated or maintained in accordance with the manufacturer's operating instructions provided with the product.
- Any product that has been used for purposes other than domestic use.
- Any damage caused by improper power input or improper cable connection.

To make a claim

If a defect in the product appears within the nominated warranty period (The identified period on the packaging/Instructions), cease using the product, and return the product **to the place of purchase**. If we agree that a defect covered by this warranty has occurred, you are entitled for replacement or refund of the product.

When making a return, please ensure the product is properly packaged to ensure that no damage occurs to the product during transit.

Where a claim for warranty extends beyond place of purchase replacement /refund (Installed products requiring service repair) please contact:

Telephone: 1300 941 901(For warranty repairs and technical support)

Supplier Name: GSM Retail Australia Pty Ltd

Supplier Address: 142-144 Fullarton Road, Rose Park, SA 5067

Email: admin@gsmretailgroup.com

G | S | M

Gerard Sourcing & Manufacturing

GSM Retail Group

Consumer Service Centre : 1300 941 901

GSM Retail Group has a policy of continual improvement throughout the product range.
As such the unit contained within may differ slightly from the unit illustrated on the pack.

MADE IN CHINA for GSM Retail Group
Mistral is a registered trademark of GSM Retail Group
142-144 Fullarton Road, Rose Park, SA 5067



Cat. No. MRVAC500B
August 2022