



# Wet and Dry Electric Shaver



**Instruction Manual**  
Model: MFSV310

# Important Safeguards

**To prevent electrical shock, personal injury or property damage, read and follow all instructions and warnings.**

## **READ ALL INSTRUCTIONS BEFORE USING KEEP AWAY FROM WATER**

This user manual accompanies this shaver (hereafter referred to as the "product"), and contains important information on setup and handling.

Before using the product, read the user manual carefully. This particularly applies to the safety instructions.

Failure to do so may result in personal injury or damage to the product.

When abroad, you must also observe country-specific guidelines and laws.

Store the user manual for further use. Make sure to include this user manual when passing the product on to third parties.

## **Proper use**

The product is exclusively designed for dry or wet shaving. It is only intended for private use and not suitable for commercial purposes.

Only use the product as described in this user manual. Any other use is considered improper and may result in damage to property or persons.

The manufacturer or vendor cannot be held liable for damages or injury incurred through improper or incorrect use.

## **Risk of electric shock!**

A faulty electrical installation, excessive line voltage, or incorrect operation may result in an electric shock.

- The product is suitable for being cleaned under running water.
- **ATTENTION:** The handheld part must be disconnected from the connection line before cleaning it with water.
- Only connect the product if the line voltage of the socket corresponds to the data on the rating plate.
- Only connect the product to an easily accessible socket so that you can quickly disconnect it from the mains supply in the event of a problem.
- Do not use the product if it is damaged or if the mains cord or plug is defective.

- The external flexible cable of the adapter cannot be replaced, if the cord of this adapter is damaged, it is necessary to dispose the adapter and replaced by a adapter of the same model.
- Do not open the housing; instead, have a qualified professional perform repairs. Contact a qualified workshop for this. Liability and warranty claims are waived in the event of repairs performed by the user, improper connection or incorrect operation.
- Only parts that comply with the original device data may be used for repairs. This product contains electrical and mechanical parts which are essential for providing protection against sources of danger.
- Do not use the product with an external timer or separate remote control system.
- Do not immerse the product or the mains cord in water or other liquids.
- Never touch the mains plug with wet or damp hands.
- Do not pull the mains plug out of the socket by the cord; instead, always pull it out by the plug itself.
- Never move, pull, or carry the product by its mains cord.
- Keep the product and mains cord away from open flames and hot surfaces.
- Lay the mains cord so that it does not pose a tripping hazard.
- Do not kink the mains cord and do not lay it over sharp edges.
- Only use the product indoors.
- Do not place the product such that there is a risk of it falling into a tub or sink.
- Never reach to retrieve an electrical device if it has fallen into water. In such a case, immediately disconnect the mains plug.
- Never insert any objects into the housing.
- Always switch the product off and unplug it when you are not using it, when you intend to clean it, or in the event of a malfunction.

- The parts that have to be fixed must be installed so they cannot fall into water.
- The product is only to be used with the power supply unit provided with the product.
- The battery must be removed from the product before it is scrapped.
- The product must be disconnected from the supply mains when removing the battery.
- The battery is to be disposed of safely.
- Never attempt to clean the product by immersing it in water and do not use a steam cleaner to clean it. Otherwise, you could damage the product.
- Stop using the product if its plastic parts exhibit cracks or breaks or are deformed. Only replace damaged parts with corresponding original spare parts.

### **Risk of injury!**

Improper handling of the product may result in injury.

- This product can be used by children aged from 8 years and above and persons with reduced physical, sensory or mental capabilities or lack of experience and knowledge if they have been given supervision or instruction concerning use of the product in a safe way and understand the hazards involved. Children shall not play with the product. Cleaning and user maintenance shall not be made by children without supervision.
- Keep children under the age of eight away from the product and mains cord.
- Do not leave the product unattended while in use.
- Make sure that children do not play with the plastic wrapping. They may get caught in it when playing and suffocate.

### **Risk of damage!**

Improper handling of the product may result in damage to the product.

- Place the product on an easily accessible, level, dry, heat-resistant and sufficiently stable work surface. Do not place the product on the edge of the work surface.
- Never place the product on or near hot surfaces (stovetops, etc.).
- Ensure that the mains cord does not come into contact with hot parts.
- Never expose the product to high temperatures (heaters etc.) or to the effects of the weather (rain etc.).
- Never fill the product with liquid.

## Save These Instructions

### **WARNING:**

Use only the charger supplied with this appliance to recharge this appliance.

If the power cord is damaged, the power cord must be replaced by the manufacturer, its service agent or similarly qualified persons in order to avoid a hazard.

The Product uses a Ni-MH Battery. Take care when removing an old Battery from the Main Body of the Electric Shaver.

Ensure that old, used Batteries are disposed of in the correct manner. These should not be put in the domestic waste. Contact your local authority for indication of a suitable method of disposal or to locate your nearest collection point.

This product has not been designed for any uses other than those specified in this booklet.

# Features of your Wet and Dry Electric Shaver



# First Use

## Checking the product and scope of delivery

If you are not cautious when opening the packaging with a sharp knife or other pointed object, you may quickly damage the product.

- For this reason, be very careful when opening it.
1. Take the product out of the packaging.
  2. Check to make sure that all parts are included.
  3. Check whether the product or individual parts are damaged. If this is the case, do not use the product.

## Basic cleaning

- Remove the packaging material and all plastic wrappings.
- Clean all parts of the product before first use as described in the chapter "Cleaning".

## Operation

### Charging the product

Fully charge the product before using it for the first time. Recharge the product when the red charge light (Plug symbol) blinks during use.

Before first use, In order to achieve the maximum charging capacity of the battery, charge your product for at least 8 hours. To begin charging, The red charge light (Plug symbol) will then illuminate. The red charge light (Plug symbol) turns to blue light (Battery symbol) when the battery is fully charged.

To maintain a charge, keep the charger plugged into a standard a 230V or 240V power outlet. Ideally, A full charge cycle takes about 8 hours. A partial charge will reduce the service time. When charging, the charger may be warm to touch – this is normal.

1. Connect the charging plug (adapter) to the power port at the bottom of the product. Connect the adapter to a mains socket. Charging starts immediately. The red charge light (plug symbol) illuminates.
2. The red charge light (Plug symbol) turns to blue light (Battery symbol) when charging is complete. Unplug the adapter from the socket and disconnect the charging plug from the product. The product is now ready for use.

3. Product can be used effectively for approximately 30 minutes after a full charge. Usage time will vary according to the duration of its charge.

**WARNING: you should disconnect the power plug from the socket after charging the battery complete, in order not to overload it. Always recharge this appliance after use to extend the life of the battery.**

**Note: Ensure that the product is charged at ambient room temperature. This should remain between 0°C and 37°C.**

## Using the product

### Risk of injury!

Improper handling of the product may result in injury.

- Warning: For safety reasons, only operate the product cordlessly.
  - Do not use the product on open wounds, cuts, sunburn or blisters.
  - Do not place excessive pressure on the shaving heads.
  - There may be a slight redness or irritation of the skin after shaving which is normal. It is because your skin must first get used to this manner of shaving.
  - After approximately 30 minutes of continuous operation, Please clean the product (see chapter "Cleaning").
1. Remove the protective cap.
  2. Press the on/off button to switch the product on.
  3. Start shaving.
  4. After shaving, press the on/off button to switch the product off and replace the protective cap. You can flip the side trimmer up by pushing upwards the Trimmer push plate on the back of the product for your personal need.
  5. Clean all parts after each use (see chapter "Cleaning").

# Cleaning

## Burn hazard!

The product will get hot during operation and may cause burns.

- Let the product cool off completely before each clean.

## Risk of short circuit!

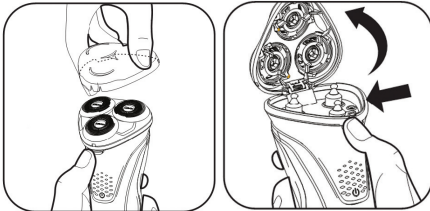
Water or other liquids that have penetrated the housing may cause a short circuit.

- Make sure that no water or other liquids penetrate the housing.
- Never immerse the product in water or other liquids.

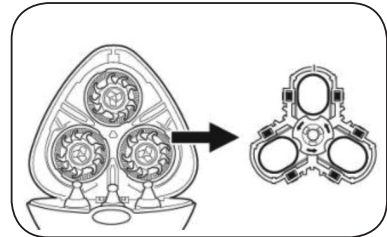
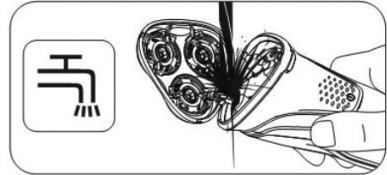
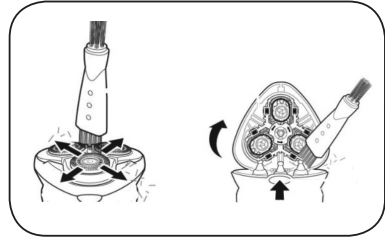
## Risk of damage!

Improper handling of the product may result in damage to the product.

- Do not use any aggressive cleaners, brushes with metal or nylon bristles, or sharp or metallic cleaning utensils such as knives, hard scrapers etc. They could damage the surfaces.
1. Unplug and let the product cool off completely.
  2. Remove the protective cap and press the release buttons to remove the shaving head.



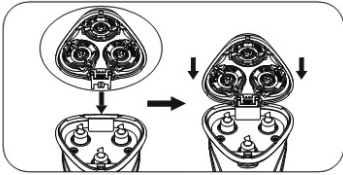
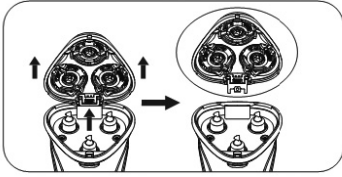
3. Remove any hair from the product with the cleaning brush. Rinse the shaving head under running water if necessary.



4. Push the tab on the back of the shaver upwards to flip the side trimmer up. Clean the blade with the brush.



5. Wipe product clean with a damp cloth.
6. After cleaning, let all parts dry completely. Close the side trimmer, and replace the shaving head and protective cap.



## Storage

All parts must be completely dry before being stored.

- Always store the product in the a dry area.
- Protect the product from direct sunlight.
- Store the product so that it is not accessible to children.

## Specifications

Model:..... MFSV310  
 Charging time:.....approx 8 hours.  
 Operating time: .....approx. 30 minutes  
 Rechargeable battery: ..... 2x1.2V 600mAh  
 Ni-MH battery.

Battery charger

- Input: .....100–240 V, 50–60 Hz
- Output: .....DC 5V 800mA

**NOTE: As a result of continual improvements, the design and specifications of the product within may differ slightly from the unit illustrated on the packaging.**

**G | S | M**

Gerard Sourcing & Manufacturing

**GSM Retail Group**

GSM Retail Group has a policy of continual improvement throughout the product range.  
As such the unit contained within may differ slightly from the unit illustrated on the pack.

MADE IN CHINA for GSM Retail Group  
Mistral is a registered trademark of GSM Retail Group

Cat. No. MFSV310  
October 2020