

*mistral*<sup>®</sup>  
COMFORT & STYLE TO YOUR HOME

# Sewing Machine



**Instruction Manual**  
Model: MSEM508

# Important Safeguards

**When using this electrical appliance, the following basic safety precautions should always be followed:**

## For Your Safety

- To protect against the risk of electric shock, DO NOT IMMERSE the main unit, adapter or cord in water or any other liquid.
- Please read these instructions before operating and retain these for future reference.
- Before connecting the appliance to the power supply, check that the voltage indicated on the appliance corresponds with the voltage in your home. If this is not the case, contact your local qualified technician and DO NOT use the appliance.
- If the supply cord or any part is damaged, cease use of this appliance immediately to avoid a hazard.
- Do not hang the power cord over the edge of table and do not let cord contact hot surfaces, including stovetop.
- Place the appliance on the flat surface. Do not place on the heated surface or near a hot gas or electric burner or oven.
- This appliance is not intended for use by persons (including children) with reduced physical, sensory or mental capabilities, or lack of experience and knowledge, unless they have been given supervision or instruction concerning use of the appliance by a person responsible for their safety.
- Children should be supervised to ensure that they do not play with appliance.
- Do not cover the air inlet or the air outlet when the appliance is working.
- Do not touch the inside of the appliance while it is operating.
- Keep the appliance and its mains cord out of the reach of children.
- DO NOT PLACE the Unit on stovetop surfaces.
- NEVER USE this appliance with an extension cord of any kind.
- Always switch off the appliance, disconnect from the power supply and remove foot pedal when:

changing the needle;  
threading the needle;  
changing bottom bobbin;  
changing any parts;  
cleaning the machine;  
after each use.

- Never run the machine when there's thread in the needle, but no fabric on the machine. This could damage the machine.
- Always keep your hands away from the needle, hand wheel, upper thread tension dial and pattern selection dial when the appliance is running.
- Never attempt to open the housing of the appliance, or to repair the appliance yourself. This could cause electric shock.
- Never leave the appliance unattended during use.
- Switch off or unplug the appliance when leaving it unattended.
- Unplug the appliance before carrying out maintenance.
- This appliance is not designed for commercial use.
- Do not use the appliance outdoors.
- Do not use the appliance for other than intended use.
- Never use the appliance if damaged in anyway.
- Whenever the sewing machine is not in use make sure it is switched off and unplugged from the power supply and remove the foot pedal.
- Keep the machine in a dry and ventilated place.

## Warning

If the supply cord is damaged, the cord must be replaced by the manufacturer, its service agent or similarly qualified persons in order to avoid a hazard.  
This product has not been designed for any uses other than those specified in this booklet.

## Save These Instructions

**THIS APPLIANCE IS DESIGNED FOR  
HOUSEHOLD USE ONLY**

# Features of Your Sewing Machine

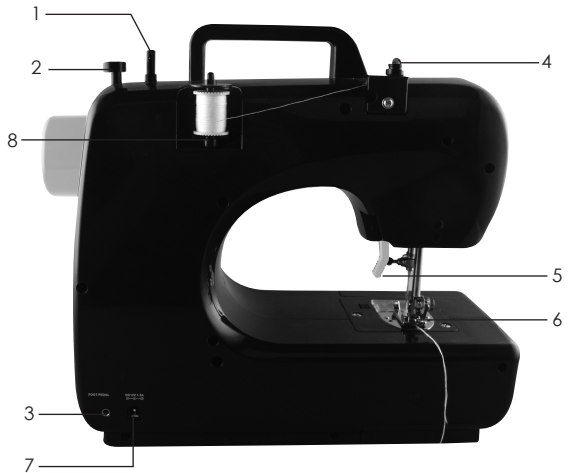
## Front view

1. Take-up lever
2. Upper thread tension dial
3. Pattern selection dial
4. Thread cutter
5. Light
6. Needle clamp screw
7. Bottom bobbin
8. Drawer
9. Hand wheel
10. Reverse button
11. Power & speed switch



## Back view

1. Bobbin winder pin
2. Bobbin winder stop
3. Foot pedal input
4. Bobbin winder tension disk
5. Presser foot lifter
6. Presser foot
7. DC input
8. Spindle



# Your Sewing Machine

## USING THE FOOT PEDAL (A) AND ADAPTOR (B)

1. Connect the foot pedal by inserting the jack into the foot pedal input socket. Then you can use the foot pedal to turn on the machine instead of using the hand switch (Power & speed switch).
2. Connect the adaptor's jack to the DC input socket on the back of the machine, and connect the plug to the main power supply.



### Caution:

- **Make sure the foot pedal is unplugged from the machine when you are not using it, so the sewing machine won't accidentally start up.**
- **The foot pedal cannot be used together with the power & speed switch. Make sure the switch is placed at the position "OFF".**
- **There is no speed selection when using foot pedal to control the machine.**

## NEEDLE REPLACEMENT

If the needle breaks, or you need a different needle to sew a different kind of fabric, just follow these steps:

**Caution: To prevent injury from accidentally starting up the machine, make sure to turn off the switch, remove the foot pedal and the adaptor plug first.**

1. Turn the hand wheel to raise the needle to its highest position. Hold the old needle and loosen the needle clamp screw. Remove the old needle and discard it properly. (Fig.1)

2. Insert the new needle into the clamp with the flat side toward the correct direction (to the back). Be sure to push the needle completely into the clamp before tightening the needle clamp screw.
3. Tighten the needle clamp screw.

**Caution: Needle direction must be correct, and be sure to tighten the thimble screw, to avoid needle falling by accident.**



Fig.1

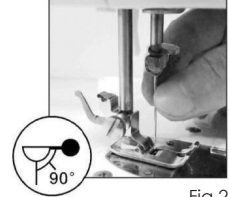


Fig.2

## PRESSER FOOT REPLACEMENT

### 1. Removing the presser foot

Turn the hand wheel counterclockwise to raise the needle to its highest position. Raise the presser foot lifter, and press the presser foot locking lever. The presser foot will drop off automatically from the locking device. (Fig.3; Fig.4)

### 2. Installing the presser foot

Put the presser foot under the presser foot locking device, lower the presser foot lifter, press the presser foot locking device to reset the foot, and lift the presser foot lifter. (Fig.5; Fig.6)

### Caution:

- **Always switch off the appliance, disconnect it from the power supply and remove the foot pedal when replacing the presser foot.**
- **When replacing the presser foot, please place the machine on a stable platform.**
- **When putting down the presser foot, please do not put your hand or finger under it to avoid injuring fingers.**

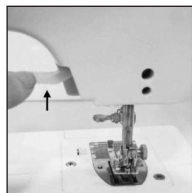


Fig.3



Fig.4

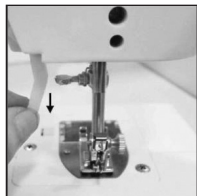


Fig.5



Fig.6

## THREADING THE SEWING MACHINE

### 1. Threading upper thread

**Caution: Always switch off the appliance, disconnect the appliance from the power supply and remove the foot pedal when threading the machine.**

- (1) Turn the hand wheel to raise the needle to its highest position.
- (2) Put a spool on the thread spindle, put on the thread spindle cover and then pull out the thread.
- (3) Pull the thread and let it pass through the bobbin winder tension disk. (mark ② in the pic. below)
- (4) Guide the thread through the groove and pull it up towards the chromed take-up lever. (marks ③ & ④ in the pic. below)
- (5) Feed the thread through the hole in the chromed lever and pull it straight down towards the needle. (marks ④ & ⑤ in the pic. below)
- (6) Feed the thread through the hole in the needle holder, then through the eye of the needle from the front side to the back and pull out 10cm to the back. (mark ⑥ in the pic. below)



### 2. Replacing the bottom bobbin

- (1) Slide the bobbin cover button to the right and remove the bobbin cover (Fig.7).
- (2) Put the new bobbin in the holder, with the thread going clockwise. Leave 10cm of thread hanging out (Fig.8).
- (3) Make a loop and put it in the hole under the needle.
- (4) Hold the end of the upper thread with one hand, and turn the hand wheel counterclockwise with the other hand, the needle thread will pick up the bobbin thread and pull it up through the hole under the needle (Fig.9).
- (5) Replace the bobbin cover and separate the two threads and pull them to the back of the machine under the presser foot, leaving about 15cm hanging there. (Fig. 10)

#### Caution:

- **Always switch off the appliance, disconnect it from the power supply and remove the foot pedal when replacing the bottom bobbin.**
- **Please use metal bobbins, otherwise the magnetic holder cannot tense the bobbin thread and work rightly.**

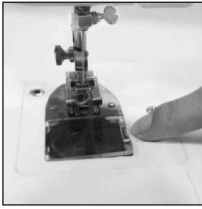


Fig.7

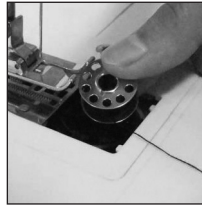


Fig.8

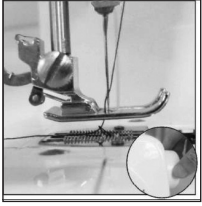


Fig.9

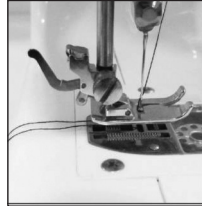


Fig.9

## SEWING

1. Turn the hand wheel counterclockwise to raise the needle to its highest position.
2. Raise the presser foot lifter and place the fabric you want to sew under the presser foot (Fig.11).
3. Lower the presser foot. (Fig.12).
4. Rotate the pattern selection dial to select the stitch pattern you want.

### Caution:

- Before you change the stitch pattern, please turn off the switch and turn the hand wheel to raise the needle all the way up so it doesn't get stuck and bent.
- Changing the stitch pattern is not allowed when the machine is running, otherwise the needle and/or machine may damage.

5. Turn the hand wheel several times to make sure there is no jamming in the stitches.
6. Slide the power switch to the position "L" (meaning low speed) or "H" (meaning high speed), and the machine will automatically start sewing. We recommend the low speed for beginners (Fig.13).
7. When you finish the sewing, turn off the switch, unplug the adapter, turn the hand wheel to raise the needle all the way up, lift

the presser foot, and then gently remove the fabric from the sewing machine, and cut the thread with the thread cutter (Fig.14).

### Tips:

- Please turn the hand wheel if it is difficult to remove the fabric, and then pull out the fabric gently.
- If the thread has tangled or jammed, please turn the hand wheel and simultaneously pull the thread slightly to release the thread. Bottom bobbin mechanism is a more precise part, inappropriate actions may damage it. Please to not push or pull it by finger or any tools.



Fig.11



Fig.12



Fig.13



Fig.14

## FEATURES

### 1. Selection of stitch pattern

Rotate the pattern selection dial to select one pattern you want from the 16 stitch patterns. There are pattern illustrations on the surface of machine body for your reference.

### Caution:

- Before you change the stitch pattern, please turn off the switch and turn the hand wheel to raise the needle all the way up so it doesn't get stuck and bent.
- Changing the stitch pattern is not allowed when the machine is running, otherwise the needle and/or machine may damage.

## 2. Reverse sewing

Reverse sewing (back stitching) is useful for reinforcing the beginning and end of seams. To use this function proceed as follows:

- (1) Sew forwards as normal, and then press and hold down the reverse stitch button on the front of the sewing machine to sew backwards.
- (2) To sew forwards again simply release the reverse stitch button.

**Note: Reverse sewing is applicable only to stitch patterns 1 to 4.**

## 3. Setting the sewing speed

Slide the power switch to "L" or "H" position. ("L" = low speed; "H" = High speed)

## 4. Work

If additional light is needed, press the light switch to turn the light on. Press the switch again to turn it off. The Work lamp cannot be replaced by yourself.



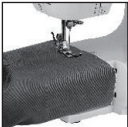
## 5. Thread cutter

The machine has a thread cutter on the central left side of the machine, it can cut off the thread after sewing or winding thread.



## 6. Sewing sleeves

This sewing machine has been designed to sew sleeves or any narrow openings in garment. Pull out the drawer and position the garment over the sewing arm if you want to sew the sleeves.



## 7. Manual buttonhole

- (1) Pull the cloth under the presser foot and lower the presser foot on the cloth where you need to sew buttonhole, then choose the 15th stitch.
- (2) Turn on the switch and sew 5-6 stitches in low speed, then turn off the switch (Fig.15).
- (3) Choose the 16th stitch, turn on switch and sew on the cloth in suitable length, then turn off switch. Note that try to keep sewed stitches in straight line (Fig.16).
- (4) Choose the 15th stitch, then turn on switch and sew 5-6 stitches in low speed, then turn off switch (Fig.17).
- (5) Raise the presser foot, rotating the cloth for 180° (Fig.18).
- (6) Choose the 16th stitch, then turn on switch and sew till buttonhole is fully sewed (Fig.19).

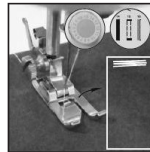


Fig.15

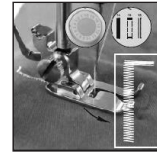


Fig.16

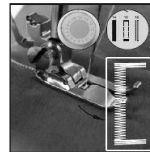


Fig.17

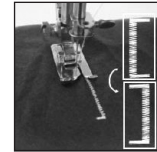


Fig.18

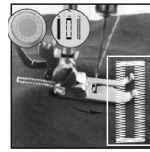
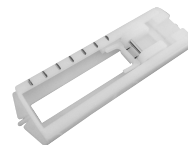


Fig.19

**The presser foot shown as below can facilitate the buttonhole sewing.**



## 8. Drawer

This drawer is an accessory storage compartment, which can be slid out and you can store spare bobbins, needles, etc. in it. It is located at the bottom side below the hand wheel.



## WINDING THE BOBBIN

1. Put a spool of thread on spool pin. (Fig.20)
2. Guide the thread through the bobbin winder tension disk on the upper side of the machine. (Fig.21)
3. Put the bobbin on the bobbin winder pin, wind thread clockwise around bobbin several times. (Fig.22)
4. Push bobbin to the left. (Fig.23)
5. Switch on the machine to start winding. (Fig.24)
6. Switch off the machine to stop winding after appropriate volume of thread you had been wound on bobbin.
7. Push bobbin away from bobbin winder stop, take bobbin off the pin and cut the thread. (Fig.25)

**Caution: Before winding the bobbin, raise the presser foot, take out the bottom bobbin and the upper thread.**

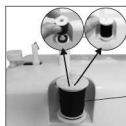


Fig.20

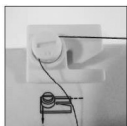


Fig.21



Fig.22



Fig.23



Fig.24

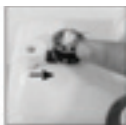
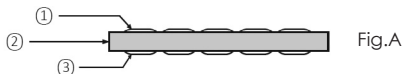


Fig.25

## ADJUSTING STITCHING

1. As shown in the Fig.A, normal stitching shall have top and bottom threading evenly, neither over tight nor loose. (① = Top thread; ② = Cloth; ③ = Bottom thread)



2. If the bottom threading looks like a straight line (Fig.B), which indicates the top thread is too loose. Please turn upper thread tension dial to direction with bigger number to increase pressure until the stitching returns to normal.



3. If the top thread looks like a straight line (Fig.C), which indicates an over-tight top thread. Please turn the upper thread tension dial to the direction with smaller number to reduce pressure until the stitching back to normal.





# Applicable Cloth For Sewing

Sewing Presentation Fabric specification	Cloth	Cotton/Linen	Silk/Wool	Polyester	Elastic
Regular		√	×	√	△
Thick		√	×	√	△
Thin		√	×	×	×
Hard		√	√	√	△
Soft		×	×	×	×

## Sewing effective:

√: means easy to sew

×: means difficult to sew

△: means not smooth to sew

## Note:

### 1. The definition of the fabric thickness:

**Thin (fabric):** two layers of the fabric thickness < 0.35mm;

**Thick (fabric):** two layers of the fabric thickness > 0.8mm;

**Regular (fabric):** two layers of the fabric thickness ≥ 0.35mm and ≤ 0.8mm.

### 2. The definition of elastic cloth:

If the cloth, which size is "100mm x 30mm", is extending to over 106mm under 0.5KG tension force, then the cloth is defined elastic, otherwise it is inelastic.

### 3. Hard fabric: such as Jeans, fine canvas, etc.

### 4. Soft fabric: such as towel, duster, etc.

## MORE TIPS

1. Make sure there is fabric under the needle when the machine is working and needle is moving, otherwise the machine will get stuck and the thread will be jammed.
2. Turn the hand wheel for 2 to 3 circles by hand to test if it goes smoothly or not before starting the machine. Direction to turn the hand wheel should be the same as the arrow's direction on the hand wheel.
3. Make sure the machine was threaded correctly (do not forget any step or have wrong threading).
4. Do not sew the cloth with too much elasticity, neither too thin (like silk) nor too thick cloth, please follow the IM for the applicable cloth.
5. If the machine gets stuck or jammed due to wrong operation, turn off the power & speed switch immediately.
6. Before winding the bobbin, please take out the bottom bobbin and the upper thread.

## Care and Cleaning

**WARNING!**

**Before cleaning or storing the appliance, always unplug the appliance from the electrical outlet.**

**Never immerse the appliance, adapter or cord in water or any other liquid.**

Wipe the appliance housing clean with a damp cloth and a mild detergent. Apply the cleansing agent to the cloth, not directly onto the appliance. Dry thoroughly.

## Storage

When the appliance is not in use, disconnect it from the power supply.

Storing the appliance and accessories safely in the original packaging will protect it from dust.

Store the appliance in a dry location, out of reach of children.

## Specifications

Adapter input: .....100-240 V AC, 50/60 Hz, 800mA Max.

Adapter output:.....12V DC, 1500 mA

Sewing Machine: .....12V DC, 1500 mA

**NOTE: As a result of continual improvements, the design and specifications of the product within may differ slightly from the unit illustrated on the packaging.**

# Notes

**G | S | M**

Gerard Sourcing & Manufacturing

**GSM International Ltd.**

GSM International Ltd has a policy of continual improvement throughout the product range.  
As such the unit contained within may differ slightly from the unit illustrated on the pack.

MADE IN CHINA for GSM International Ltd.  
Mistral is a registered trademark of GSM International Ltd.

Cat. No. MSEM508  
October 2020