



Window Vacuum Cleaner



Instruction Manual

Model: MWWC001

Important Safeguards

When using electrical appliances, in order to reduce the risk of fire, electric shock, and/or injury, these basic safety precautions should always be followed:

For Your Safety

Read all instructions carefully, even if you are quite familiar with the appliance.

- This appliance is not intended for use by persons (including children) with reduced physical, sensory and mental capabilities, or lack of experience and knowledge, unless they have been given supervision or instruction concerning use of the appliance by a person responsible for their safety.
- Children should be supervised to ensure that they do not play with the appliance.
- This appliance is for household use only. Do not use this appliance for anything other than its intended use. Do not use in moving vehicles or boats. Do not use outdoors. Misuse may cause injury.
- Do not allow this appliance to be used as a toy. Close attention is necessary when used nearby children.
- Use only as described in this manual and only use manufacturer's recommended attachments.
- Do not use with damaged cord or plug.
- Do not handle charger or appliance with wet hands.
- Do not put any object into openings. Do not use with any opening blocked. Keep free of dust, lint, hair and anything that may reduce airflow.
- Keep hair, loose clothing, fingers and all parts of body away from openings and moving parts.

- Do not vacuum the following objects: toxic substances, flammable and explosive dangerous material, corrosive material and burning ash, matches, cigarette and combustible liquids, such as gasoline.
- Do not use the appliance to vacuum any dust harmful to health.
- Do not use without container and filter in place. Clean container and filter after picking up any perishable food items.
- Do not add harsh cleaning materials such as caustics, acids, scented perfumes, oils or cleaning products not intended for this type of cleaning to the water tank as this may damage the product or make it unsafe to use. Only use clear water. The use of distilled water is recommended in areas with hard water to avoid lime scale deposits inside the product.
- Avoid picking up hard, sharp objects with the vacuum cleaner as they may damage the container and the filter.
- Use the vacuum function only to vacuum liquids used during the cleaning process.
- Only use the device on smooth, solid, flat surfaces that is suitable to withstand moisture.
- Be extra careful when cleaning windows.
- Never carry the appliance by the cord or to disconnect from an outlet by pulling on the cord; instead, grasp the charger and pull to disconnect. Do not pull cord around sharp edges or corners.
- Do not immerse the appliance, charger and cord in water or any other liquid.
- Always switch the appliance OFF when charging.
- Do not attempt to use the charger with any other product.
- The use of an extension cord is not recommended. Only plug the charger into a standard electrical outlet (230V or 240V outlet).
- Do not operate with a damaged charger and cord, or after the appliance has malfunctioned or been damaged in any manner.

Warning

If the power cord is damaged, the power cord must be replaced by the manufacturer, its service agent or similarly qualified persons in order to avoid a hazard.

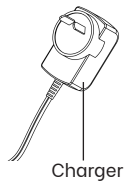
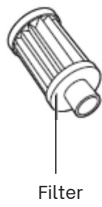
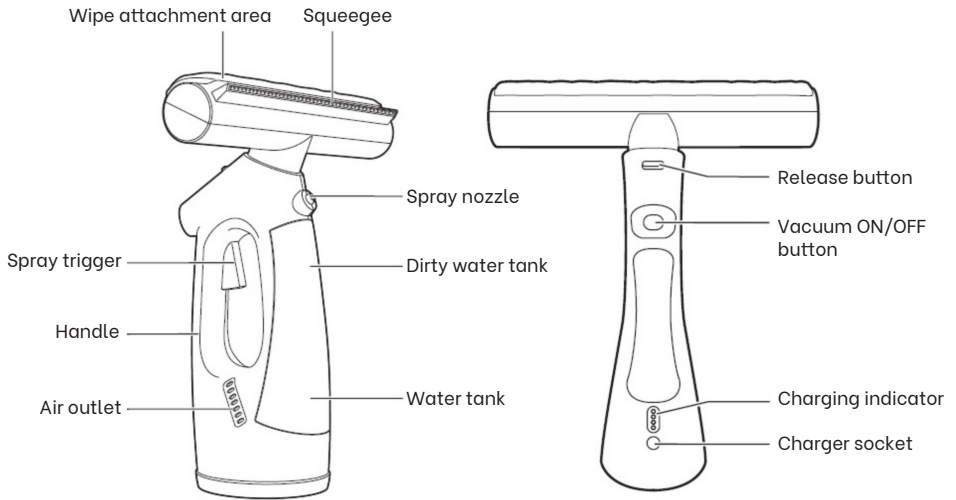
The Product uses a Lithium-ion Battery. Take care when removing an old Battery from the Main Body of the Vacuum Cleaner.

Ensure that old, used Batteries are disposed of in the correct manner. These should not be put in the domestic waste. Contact your local authority for indication of a suitable method of disposal or to locate your nearest collection point.

This product has not been designed for any uses other than those specified in this booklet.

Save These Instructions

Features of Your Window Vacuum Cleaner



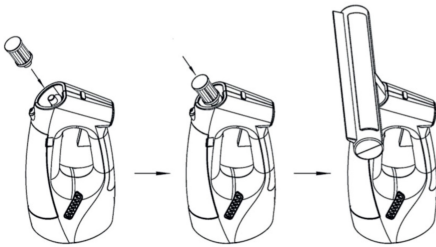
Before First Use

Remove all the packaging materials. Check to make sure that there are no missing accessories.

Clean the product and its accessories. If necessary, clean the product with a wet cloth and some mild detergent (please refer to the “Care and Cleaning” section).

Check the product for any damage before each use. Do not use the product or charger if it is damaged or not functioning properly.

Assembling the Window Vacuum Cleaner



1. Insert the filter into the main body of the product as shown in the diagram. Push to make sure the filter is properly installed. Do not use the product without installing the filter.
2. Install the cleaner head onto the main body.

Charging the battery

Attach the charger to the product through the charger socket before connecting the charger to a power outlet. Make sure the specifications indicated corresponds with the local voltage. The charging indicator lights up and flashes when the product is charging. The four LED lights turn all ON when the battery is fully charged. It takes at most 3 hours to fully charge the battery.

Note: Do not use the product when charging. Unplug the charger from the charger socket before cleaning the window.

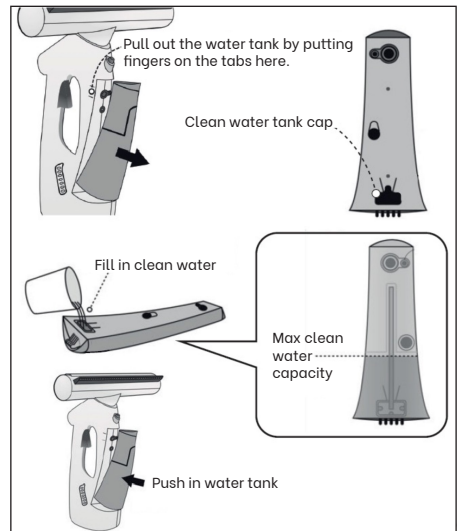
Note: It is recommended to unplug the charger when charging is complete and the four charging indicator lights are ON.

Note: It is recommended to fully charge the product before each use.

Filling the water tank

1. Before filling the water tank, make sure to switch OFF the window vacuum cleaner and disconnect it from the charger.
2. Holding the product by one hand, pull out the water tank by the other hand.
3. Tilt the water tank slightly forward and open the cap for clean water at the lower part of it.
4. Fill the clean water tank to nearly full and replace the water tank cap.
5. Push to install the water tank back onto the window vacuum cleaner.

Tips: In case of heavy dirt and grease, add a few drops of vinegar to the clean water tank. This helps to degrease and clean the windows. This is an environment friendly and economic solution.



Note: The appliance must be disconnected from the charger while filling the water tank.

Note: Do not add harsh cleaning materials, caustics, acids, scented perfumes, oil or cleaning products not intended for this type of cleaning to the water or the water tank as this may damage the product or make it unsafe to use. Only use clear water. The use of distilled water is recommended in areas with hard water to avoid lime scale deposits.

Attaching cleaning wipes

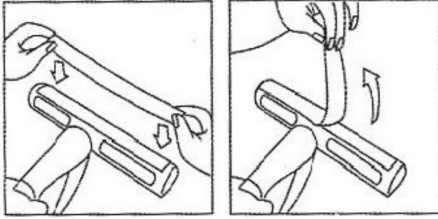


Figure 1

Figure 2

1. Position the cleaning wipe evenly on the wipe attachment area with Velcro at the entire length, as shown in Figure 1.
2. Press the surface to secure the wipe.
3. To remove the wipe, simply tear it off as shown in Figure 2.

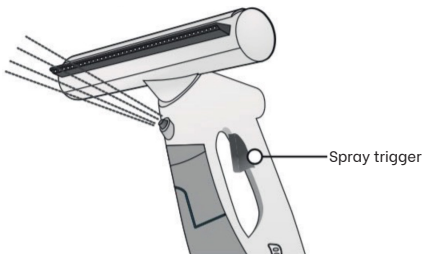
Emery wipes can be used to remove tough stains and grease from surfaces. The microfiber wipes give a shiny and streak-less finishing for cleaned or less dirty surfaces.

For maximum results, wipes should be replaced regularly according to their cleanness. Wipes can be machine washed at 40°C. Do not dry it with a dryer.

Operation

Spray

Hold the product by the handle and direct the spray nozzle towards the area to be cleaned. Press the spray trigger to spray water on the surface.



Warning: Do not direct the spray to eyes or surfaces with electronic components, such as plugs, switches, cables, stereo, equipment, computer screens, or household appliances.

Clean

After spraying, turn the window vacuum cleaner around and hold the water tank side. Clean the surface with either one of the wipes attached on the product. If necessary, you may spray a mild glass cleaner on the surface before cleaning.

Vacuum

Once finished cleaning with wipe, turn the window vacuum cleaner around again and press the Vacuum ON/OFF Button to turn ON the vacuum cleaner. Keep the product in a horizontal position and move the squeegee over the surface in a gentle, top-to-bottom movement to vacuum and remove the dirt and excess water.

Warning: Use the vacuum function only to vacuum liquids used during the cleaning process.

After use

1. Turn OFF the vacuum function by pressing the Vacuum ON/OFF Button.
2. Let the window vacuum cleaner rest for 30 seconds.
3. Clean the vacuum cleaner according to instructions in the "Care and cleaning" section.

Care and Cleaning

Note:

- **Always switch the window vacuum cleaner OFF and unplug the charger before cleaning.**
- **Never immerse the product and/or the charger in water or other liquids.**
- **Do not expose the window vacuum cleaner to extreme weather conditions. The accessories must not be cleaned in a dishwasher.**

Cleaning the window vacuum cleaner

1. Make sure to turn the window vacuum cleaner OFF.
2. Remove the water tank and empty the dirty water tank by turning it upside down above a sink.
3. Remove the filter and wash it carefully. The collected water from the vacuum cleaner is recycled through this filter so it is important to clean it after each use.
4. Clean the main body and accessories with a damp cloth and a mild detergent. Allow to dry completely.

Note: Never use abrasives, bleaching agents or steel wool to clean the product. This could cause damage to the product.

Rinsing the water tank

To clean the water tank, fill it with water, firmly close the caps and shake it vigorously. This will help to remove any lime-scale deposits that have collected on the bottom of the tank. Open the caps and pour the water out by turning it upside down above a sink.

Lime-scale removal

To extend the life of the product, it is recommended to descale every six months. Switch the device OFF and open the water tank caps. Fill the water tank with 130ml of hot water around 50°C and add one or two descaling tablets. Close the caps and pour the water out as described above after 30 minutes.

Storage

If you need to store this product for a long time, make sure the product and the accessories are completely clean and dry before storing. Store the product at a dry and cool place away from direct sunlight.

Specifications

Main unit input:.....DC 5V 1A
Charger input:.....100-240V ~ 50/60 Hz
Full Charge Time:2-3 hours
Battery:Li-ion DC 3.7V 1500mAh
Clean Water Tank:80ml Max
Dirty Water Tank:45ml Max

Note: As a result of continual improvements, the design and specifications of the product within may differ slightly to the unit illustrated from the packaging.

Disposal

If the device is to be disposed of, it is best to remove the battery. Used batteries should not be disposed of with household waste; it should always be taken to the recycling center of the local authority. If you are unable to disassemble the product yourself, the local authorities recycling center will dispose of the product for you in an environmentally sound manner. In the event of product failure or damage, all inspections and repairs must be performed by a qualified electrician or technician.

Notes

Notes

Notes

Warranty

This product is guaranteed to be free from defects in workmanship and materials, including parts and unless otherwise specified, for a period of 12 months from the date of purchase.

Defects that occur within the warranty period, under normal use and care, will be repaired, replaced or refunded at our discretion.

The benefits conferred by this warranty are in addition to all rights and remedies in respect of the product that the consumer has under the Competition and Consumer Act 2010 and similar state and territory laws.

Our goods come with guarantees that cannot be excluded under the Australian Consumer Law. You are entitled to a replacement or refund for a major failure and for compensation for any other reasonably foreseeable loss or damage. You are also entitled to have the goods repaired or replaced if the goods fail to be of acceptable quality and the failure does not amount to a major failure.

Proof of Purchase

This warranty is valid for the original purchase and is not transferable. Please keep your purchase docket, tax invoice or receipt as the best proof of purchase, and as proof of date on which the purchase was made.

Extent of Warranty

This warranty is limited to defects in workmanship and materials, including parts. All defective products or parts will be repaired, replaced or refunded. This warranty does not cover batteries or any other consumable items.

Normal wear and tear

This warranty does not cover normal wear to the products or parts.

Exclusions

This warranty does not cover:

- Any defects caused by an accident, misuse, abuse, improper installation or operation, lack of reasonable care, unauthorised modification, loss of parts, tampering or attempted repair by a person not authorised by the distributor.
- Any product that has not been installed, operated or maintained in accordance with the manufacturer's operating instructions provided with the product.
- Any product that has been used for purposes other than domestic use.
- Any damage caused by improper power input or improper cable connection.

To make a claim

This warranty against defects is given by: **Woolworths Group**

Address: 1 Woolworths Way, Bella Vista, NSW 2153

Email: www.woolworths.com.au

Telephone: 1300 767 969

If a defect in the product appears within the nominated warranty period (The identified period on the packaging/Instructions), cease using the product, and return the product **to the place of purchase**. If we agree that a defect covered by this warranty has occurred, you are entitled for replacement or refund of the product.

When making a return, please ensure the product is properly packaged to ensure that no damage occurs to the product during transit.

Where a claim for warranty extends beyond place of purchase replacement /refund (Installed products requiring service repair) please contact:

Telephone: 1300 373 199 (For warranty repairs and technical support)

Supplier Name: GSM Retail Australia Pty Ltd

Supplier Address: 142-144 Fullarton Road, Rose Park, SA 5067

Email: admin@gsmretailgroup.com

G | S | M

Gerard Sourcing & Manufacturing

GSM Retail Group

Consumer Service Centre : 1300 373 199

GSM Retail Group has a policy of continual improvement throughout the product range.
As such the unit contained within may differ slightly from the unit illustrated on the pack.

MADE IN CHINA for GSM Retail Group
Mistral is a registered trademark of GSM Retail Group
142-144 Fullarton Road, Rose Park, SA 5067



Cat. No. MWWC001
May 2023