

*mistralaire*<sup>®</sup>

# Smart Bladeless Fan And Air Purifier



## Instruction Manual

Model: SKJ-CR022

# Important Safeguards

**When using electrical appliances, in order to reduce the risk of fire, electric shock and/or injury, these basic safety precautions should always be followed:**

## For Your Safety

***Read all instructions carefully, even if you are familiar with the appliance.***

- To protect against the risk of electric shock, DO NOT IMMERSE power cord or plug in water or any other liquid.
- Do not throw the charger into fire and do not expose it to extreme heat. The charger could explode or burst.
- Do not use this product if it appears to be damaged.
- This appliance is not intended for use by persons (including children) with reduced physical, sensory and mental capabilities, or lack of experience and knowledge, unless they have been given supervision or instruction concerning use of the appliance by a person responsible for their safety.
- Children should be supervised to ensure that they do not play with the appliance.
- Always unplug the unit when not in use.
- Do not operate unit with a damaged power cord or plug, or after a malfunction, has been dropped or is damaged in any manner. Return the unit to an authorised service facility for examination.
- This unit is not intended for use in bathrooms, laundry areas or similar moist indoor locations. Never locate the unit where it may fall into a bathtub or other water container.
- Do not run the power cord under carpeting or cover the power cord with throw rugs, runners or the like. Arrange the power cord away from traffic areas and where it will not be tripped over.
- Do not place the power cord over any part of the unit.
- Do not plug this unit into an extension lead, double adapter or power board.
- To disconnect the unit set main switch to OFF then remove the plug from the outlet.
- This unit has hot electrical parts inside. DO NOT use it in areas where gasoline, paint or flammable liquids are used or stored.
- Do not insert or allow foreign objects to enter any ventilation or exhaust opening as this may cause an electric shock, fire or could damage the unit.
- Use the unit only as described in this booklet. Any other use not recommended by the manufacturer may cause fire, electric shock or injury to persons.
- Fully remove the power cord from the power cord tidy before use. Always uncoil the power cord before applying power.
- This product must always be used AND STORED in the upright position.
- Do not use this unit with a programmer, timer or any other device that switches the unit on automatically, since a fire risk exists if the unit is covered or positioned incorrectly.
- Do not touch the power supply or power cord with wet hands.
- Unplug appliance when cleaning, removing/replacing filter, or moving the device.
- Use indoor only.
- If it is necessary to move the unit after the water has been added, roll gently to the required position.
- Do not move the machine when it is in use.
- Do not block air circulation.
- Place the machine on a level surface.
- Unplug the appliance during filling and cleaning.
- Do not touch the Ultrasonic vibration plate.
- Clean regularly as per Maintenance instructions to avoid malfunction.
- Always unplug from power supply before maintenance.
- Keep away from directing sunshine heat sources and air conditioners or fans.
- Always keep on stable flat surface do not place on carpet, duvet or unstable area.

- CAUTION: DO NOT COVER the appliance in any way in order to avoid overheating and fire.
- Do not run the cable under carpets, do not cover it with carpets or similar covers. Route the cable outside the traffic area to avoid tripping the cable.
- Turn off all controls before pulling the plug and pull the plug out of the socket if you are not going to use the device for a long time.
- Do not place any objects on the air inlet or outlet. Make sure that the ventilation openings are free of dust, lint, hair and other obstacles that could impair the air flow.
- The fan should be set up dry on a horizontal platform and should not be near heat sources, corrosive air and moisture. The fan should be kept a distance of 150 mm around to ensure good air circulation.

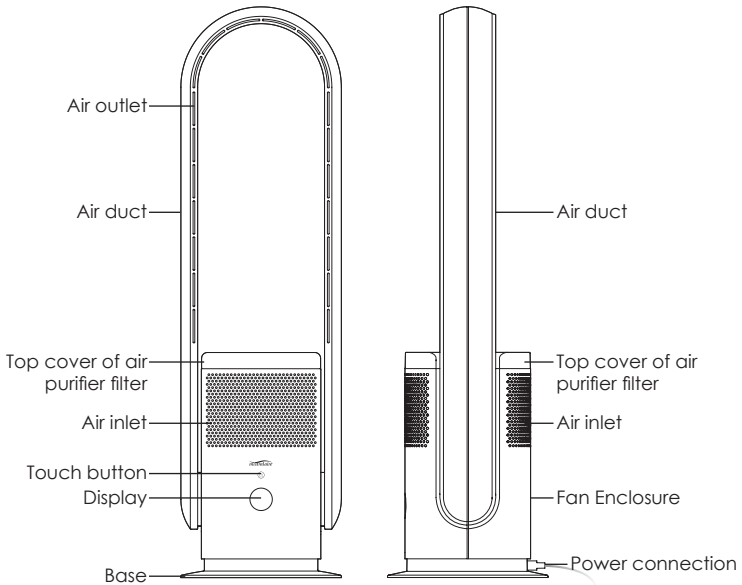
## Warning

If the adaptor is damaged, the adaptor must be replaced by the manufacturer, its service agent or similarly qualified persons in order to avoid a hazard.

This product has not been designed for any uses other than those specified in this booklet.

## Save These Instructions

# Features of Your Smart Bladeless Fan and Air Purifier



## Product Specifications

Rated Voltage: 220-240V~

Oscillation:  $80^{\circ} \pm 5^{\circ}$

Power: 35W

Frequency: 50-60Hz

Timer: 1-8H

Scope of delivery contents : Fan assembly, power supply cord, remote control, operating instructions.

**NOTE: As a result of continual improvements, the design and specifications of the product within may differ slightly to the unit illustrated on the packaging.**

# Your Smart Bladeless Fan and Air Purifier

Congratulations on the purchase of your new Smart Bladeless Fan and Air Purifier.

Before first using your Smart Bladeless Fan and Air Purifier, it is most important that you read and follow the instructions in this use and care booklet, even if you feel you are quite familiar with this type of appliance.

Your attention is drawn particularly to the section dealing with IMPORTANT SAFEGUARDS. Find a place and keep this booklet handy for future reference.

Your designed to function quietly and safely under normal circumstances.

This quality fan/air purifier is fully portable, with sturdy base and a modern design.

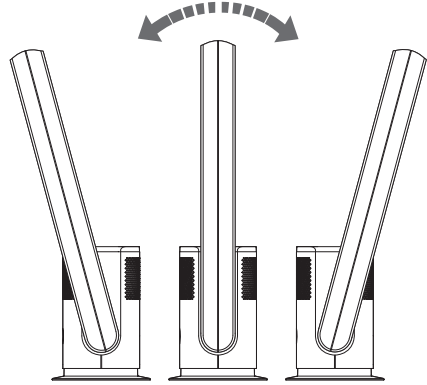
## Operation

1. Carefully remove the Fan from the plastic bag and carton. Place the Fan on a level surface in a stable upright position.
2. Connect the mains cord to the connector jack of the Fan
3. Unwind the power cord and plug your Fan into a socket outlet. Ensure that the voltage on the specifications plate is the same as in your home.
4. Switch on and off  
Connect the power supply, the LED display lights up and the machine goes into standby mode. Click the appliance Power Button "⏻" to turn on the Fan, the buzzer will beep once and the fan will start. Press and hold the power button "⏻" for 2 seconds, the buzzer will beep twice and the fan will stop running after you release your finger.

5. Set the air volume  
When the fan is operating: Click the button "⏻" to adjust the air volume from 1 to 9.

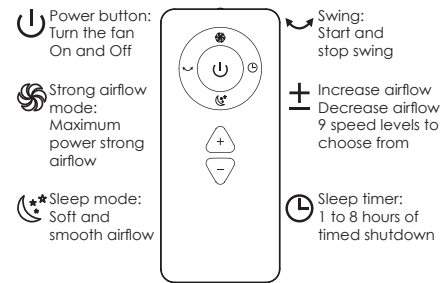
6. Oscillation  
When the fan is operating, press and hold the screen touch button "⏻" for 1 second. The buzzer beep once and the fan starts to oscillate. Press and hold the screen touch button "⏻" again for 1 second. The buzzer beep once and the fan stops oscillating.

6. Air movement direction  
Adjust the fan head position after fan has stopped. Hold fan body with one hand and set the wind outlet 15° before and after. push fan head backwards or forwards maximum 15 Degrees to your desired direction.



**Warning: Only adjust the tilt angle after the fan has stopped operating. Do not tilt the fan head more than it is intended to. Doing so will damage the fan.**

## Remote Control



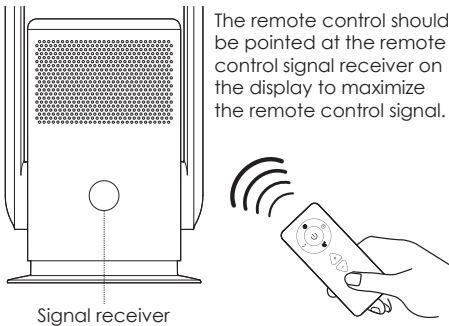
1. The device can be switched on and off by pressing the "ON & OFF" button.
2. Press the "strong airflow mode" button on the remote control. The display will show H and the airflow strength will increase. Press again to exit strong airflow mode. (You can also exit the current mode by pressing the "+ -" Exit button.)

☾\*\* Press the "Sleep mode" button on the remote control.  
The display shows L and the airflow force is reduced.  
Press again to exit the night sleep mode.  
(You can also exit the current mode by pressing the "+ - "Exit button.)

↺ Press the "Oscillation" button on the remote control to switch on the oscillating function.  
This fan can swing 80° left and right.  
Press this button again to stop oscillating process.

+ - Press the "+" button on the remote control to increase the air volume.  
Press the "-" button to decrease the air volume.  
There are 9-speed settings.

🕒 Press the timer button on the remote control to set 1 to 8 hours. Press the timer button on the remote control, the display shows: "0" to cancel the timer.  
After the timer function is set, other functions can be used normally.  
When the device is turned off, the timing setting is also canceled.



### Possible phenomenon

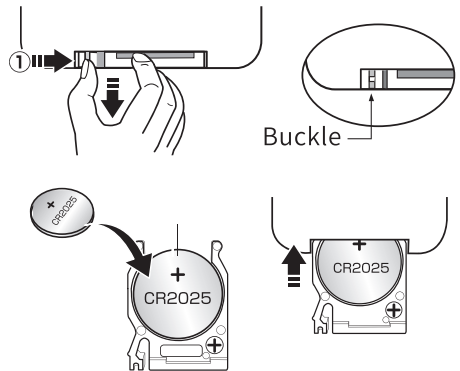
1. This fan may respond to the remote control of other devices.
2. If you use the remote control of this fan, other devices may respond.

This is due to the overlapping frequencies of the remote control.

There is no quality problem in the product itself.  
To avoid misuse, keep the remote control away from other electrical devices during operation

### Battery Replacing (For Remote Control)

1. The remote control requires one "CR2025" type 3-volt lithium battery (included). If the operation of the remote control becomes unsatisfactory, replace with a new 3-volt lithium battery.
2. Place the remote control with the control buttons facing downward.
3. Loosen the cover screw. Press the locking arm of the battery cover and pull out the tray. (Push tab "A" towards the middle first. See the Fig.1).



4. Place one new 3V CR2025 battery into the battery tray with the positive "+" side facing up, observing the polarity markings. If the battery is placed incorrectly, the remote control will not work. CAUTION: There is danger of malfunction if the battery is replaced incorrectly. Replace only with the same or equivalent type of battery.
5. Insert the battery holder into the battery compartment and ensure it is secured. tighten the cover screw.

## WARNINGS:

1. Please remove the battery if the unit will not be used for a long period of time. Use only the specified size and type of battery.
2. Keep coin-sized button batteries and devices out of sight and out of reach of children.
3. Examine devices and make sure the battery compartment is secure.
4. Dispose of used button batteries immediately. Flat batteries can still be dangerous.
5. If you suspect a child has swallowed a button battery, immediately go to a hospital emergency room.



DANGER if swallowed

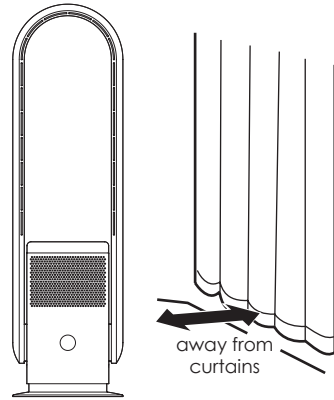
**WARNING:** This product contains a coin/button cell battery inside. Keep batteries out of reach of children. Swallowing may lead to serious injury or death in as little as 2 hours due to internal burns.

**If swallowed, immediately call the 24-hour Poisons Information Centre on 13 11 26 (in Australia) or 24-hour National Poisons Centre on 0800 764 766 (in New Zealand) for fast, expert advice. Dispose of used batteries immediately.**

This product has been designed so that the coin/button cell battery is not accessible to young children, as the battery compartment cover is secured with a screw or mechanical fastener. Always ensure that the compartment is secured before use.

6. Tell others about the risk associated with button batteries and how to keep their children safe.

## Installation



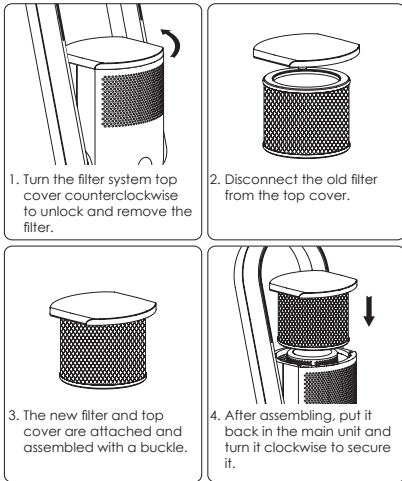
- Please use the fan on a flat platform. Do not place the fan in an unstable place, such as an inclined or soft surface, to avoid damage or malfunctions caused by the fan tipping over.
- Avoid blocking the air inlet when using. Stay away from the curtains to avoid objects blocking the air inlet and the fan not working.
- Do not place any objects within 30 cm of the air outlet, otherwise the blower effect will be impaired.

# Filter replacement

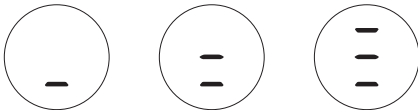
This machine is equipped with an air cleaning filter.

Before using the fan, the filter should be installed in the fan so that the air can be cleaned.

Installation and replacement method of air cleaning filter:



## Auto reminder of Filter Replacing



- The fan has a memory function. After a total of 720 hours of operation, the display (as shown in the figure) lights up cycle indicator light when turned on, the buzzer sounds 5 times and the status is displayed after 5 seconds.
- After replacing the filter screen, the power button on the remote control device can clear the alarm for 5 seconds and the operating time is reset again.

# Operating through Smart Life

Download and install Smart Life APP.

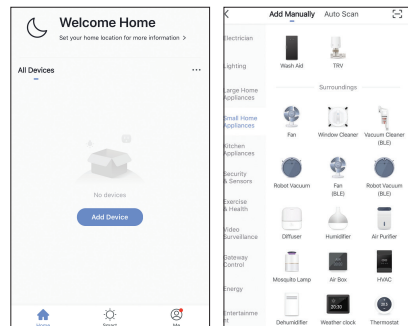
Use your smart phone to scan the QR code below to download "Smart Life" App.



Or search "Smart Life" in either Apple Store or Google Play to download and install the App.

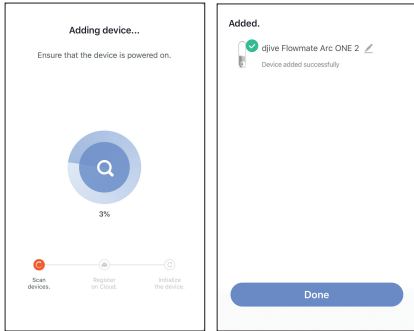
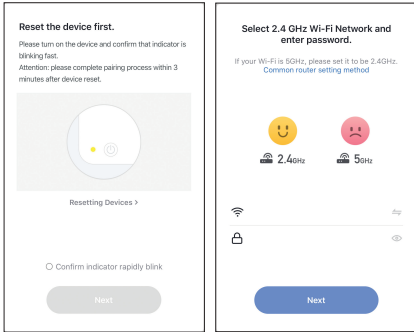
**Step 1:** Run the "Smart Life" App and either register a new account or login with your existing account and password. You will need to add your Smart Fan to the same WiFi Router as your phone by following the below instructions.

**Step 2:** Open the App and click "Add Device" or "+" to add device, select "Small Home Appliance" in the list of devices and tap "Fan" icon.





**Step 3:** Make sure the power is connected to the fan before using. Plug the Fan into an AC 240V~50Hz mains outlet. Press and hold the power button for 5 seconds,. Ensure your phone is connected with your local 2.4GHz WIFI.

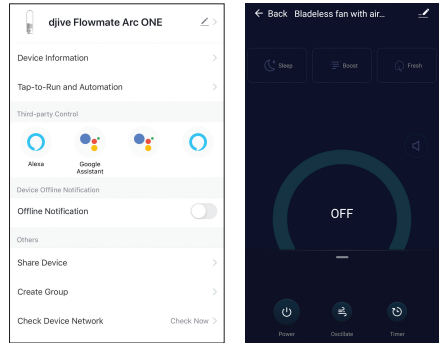


**Step 4:** In OFF mode, press and hold the button "for 5 seconds", the display will show "F" and until the "F" flashes rapidly. If not, try again. The network connection is abnormal if the indicator flashes slowly, please check the router or network configuration.

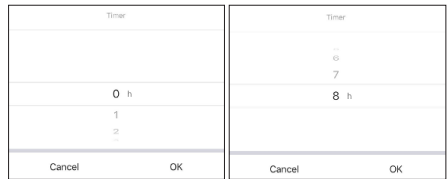
**Step 5:** Click "Confirm light blinks rapidly". Type in your WiFi password and click "Confirm" to search device. Once the configuration is completed, the indicator light will stop blinking rapidly.

**Note:** If the Smart Fan is failed to establish connection, make sure there is no special symbol in your WiFi name (should only contain letters and numbers) and password, try again by repeating Step 4 & Step 5 to set it up.

**Step 6:** Once connected, you can rename your Smart Fan and select the Room (e.g. Living Room) where your Smart Fan is located. This helps you identify the device when you want to cast to it.



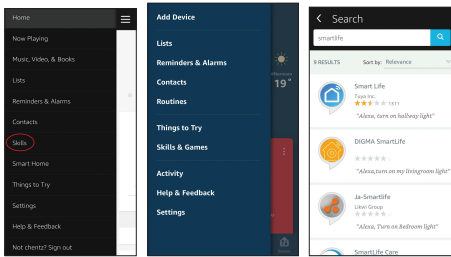
**Step 7:** You can tap the "Power icon" to turn on/off the fan. Sliding Press "The blue circle" to adjust the fan speed, Press "Oscillat" to adjust the Oscillation Press "Sleep", "Boost" or "Fresh" to select your want Press "Time", to set 1 to 8 hours.



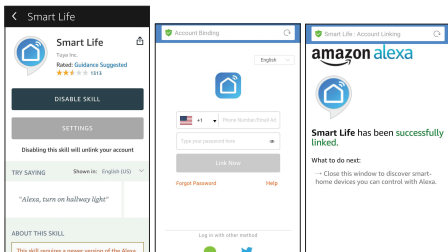
# Operating through Amazon Alexa @ Echo dot

The Smart Fan works seamlessly with Alexa to give you hands-free voice control.

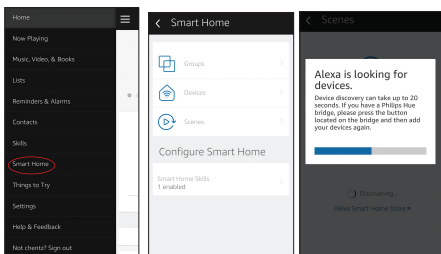
**Step 1:** Link Smart Life account to Alexa. Run Alexa App and connect your Echo dot. Go to Home menu. Select "Skills" or "Skills & Games" in Home menu and search "Smart Life" on search window. And then select "Smart Life" and tap "Enable" to enable the Smart Life skill.



**Step 2:** Select your country code and enter your "Smart Life" App Login and Password, then press the "Link Now" button. Choose "Smart Life" and tap "Link Now" again. And then press "Authorize" button. Wait until "Alexa has been successful linked with Smart Life" pops up.



**Step 3:** Back to the menu, press "Smart home" button and choose "Devices". And then press "Discover" button.



**Step 4:** Your device is connected successfully if you find the device in the Devices list. You can use your echo dot through Alexa to control your Smart Lamp by voice now.

## Control your intelligent product via Amazon Alexa

When the accounts have been successfully linked, you can use your smart products via control the Amazon Alexa device by voice command, e.g.:

Hi Alexa, turn on the "device name" // Hello Alexa, turn on the "device name"

Hi Alexa, turn off the "device name" // Hello Alexa, turn off the "device name"

Hi Alexa, set the "device name" to 9 speeds //

Hello Alexa, set the "device name" to 9 Speeds

Hi Alexa, increase / decrease the "device name" speed // Hello Alexa, increase / decrease the Speed of the "device name"

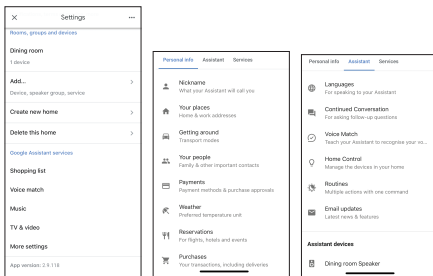
**Note:** "device name" or "device name" is the name assigned by the user. , for example, set the device as a "fan".

**Note:** Echo needs to discover your smart devices before it controls them. You can say "Alexa, discover devices" to Alexa. Alexa will discover devices in about 20 seconds. Now, you can control your smart devices through Echo.

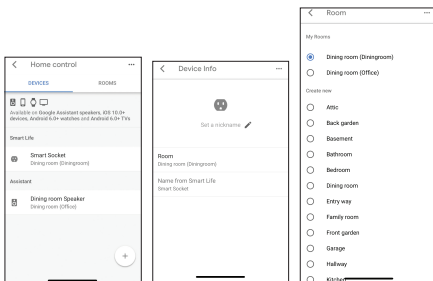
# Operating through Google Home

The Smart Fan works with the Google Assistant, allowing you to control your device by using your Google Home devices, your Android or iPhone, or any other device with built-in Google Assistant support. You'll enjoy seamless, intuitive voice control to this Smart Fan.

**Step 1:** Open Google Home App by tapping the app icon on your device. Tap "Sign up" and choose one Google account that you already logged in on your mobile device. Find and tap "Settings" from Home page. And then tap "More Settings".



**Step 2:** Tap "Assistant". Tap "Home Control". Tap "+". Find "Smart Life" in the list. In the input window, select your Smart Life account's region type and input your account and password. The link tab will be highlighted.



**Step 3:** Tap "Link Now". After linked, select the Room (ex Living Room) where your Smart Fan is located. This helps you identify the device when you want to cast to it.

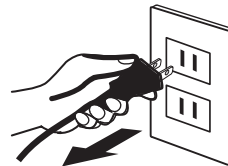
**Step 4:** After then, your devices will be listed in the Home Control page and now you can control your Smart Fan through Fan Home. And you can now activate Smart Lamp ON/OFF via voice instructions to Google Home Device.

Control your smart product through Google Home  
Now you can use your Google Home device to control your products using voice commands, e.g. :  
Hey Google, turn on the "device name" // Hey Google, turn on the "device name"  
Hey Google, turn off the "device name" // Hey Google, turn off the "device name"  
Hey Google, set the "device name" to 9 speeds // Hey Google, set the "device name" to 9 Speeds  
Hey Google, increase / decrease the "device name" speed // Hey Google, increase / decrease the speed of the "device name"  
Note: "device name" or "device name" is the name assigned by the user. for example, set the device as a "fan".

**Note: "device name" or "device name" is the name assigned by the user. for example, set the device as a "fan".**

## Maintenance and Cleaning

Before maintenance work, pull the mains plug out of the socket.



### Surface

Gently wipe the fan surface with a soft, dry cloth. If the surface of the fan is dirty, dilute it with a mild detergent and wipe the surface of the fan with a soft cloth. Then wipe them off with a dry, soft cloth.

### Air inlet & air outlet

Use a soft brush or vacuum cleaner to clean the dust at the air inlet and outlet. If there is too much dust, this can affect the fan.

### Remote control

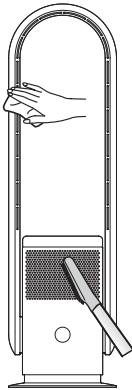
Gently wipe the surface of the remote control with a soft, dry cloth. If it will not be used for a long time, please remove the button battery in the remote control

## Power plug

Please clean the power plug with a soft, dry cloth

## Safe keeping

1. After the fan has been cleaned, it can be stored in a plastic bag.
2. Keep away from vibrations and electrical devices with cooling / heating function.
3. Do not expose it to direct sunlight, hot and humid places.
4. Keep out of the reach of kids.



## Disposal

Do not dispose of packaging or the product through your household waste! The product and packaging are made from recyclable materials (plastics, metals, paper).

If the product is no longer suitable for use dispose of it in an environmentally friendly manner in accordance with your local council.

# G S M

Gerard Sourcing & Manufacturing

## GSM RETAIL AUSTRALIA PTY LTD

GSM Retail Australia Pty Ltd has a policy of continual improvement throughout the product range. As such the unit contained within may differ slightly from the unit illustrated on the pack.

MADE IN CHINA for GSM Retail Australia Pty Ltd.



Cat. No. SKJ-CR022  
September 2020