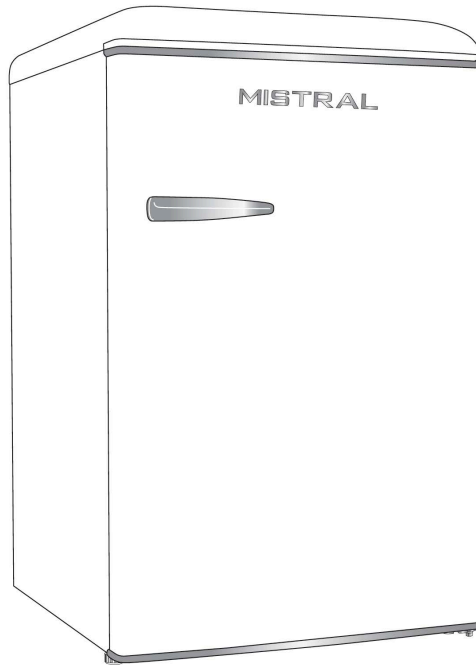


# *mistral*<sup>®</sup>

## OPERATION INSTRUCTIONS



## Retro Bar Fridge 117L White

Model No. MBF117RW

# Thank you

Thank you for choosing Mistral Appliances.

Mistral Refrigeration carries a 12 month exchange warranty.  
Be sure to retain your user manual and receipt.

For all warranty and technical queries please contact

**Australia 1300 373 199**

**New Zealand 0800 764 912**

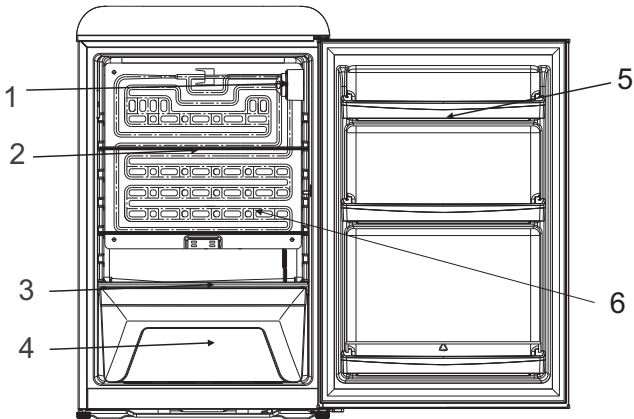
# Contents

Names of Parts .....	4
Safety Warning .....	5 - 6
Installation Instructions .....	7
Operation Instructions .....	7 - 8
Packing and Moving .....	8
Maintenance .....	9
Defrost .....	9
Disconnecting the Appliance .....	9 - 10
User notification .....	10
Troubleshooting Tips .....	11
Specifications and Parameters .....	12
Packing List .....	12
Install the Handle .....	13
Warranty .....	14 - 15

**Please read this manual carefully before using product whilst adhering to the operating instructions and safety notices outlines throughout.**

**This manual explains the proper installation and use of your range hood, please read it carefully before using even if you are familiar with the product. The manual should be kept in a safe place for future reference. In case of failure, only the Authorised Technical Service may repair this range hood. Otherwise the guarantee will be null and void. All Appliances are for domestic use only.**

# Names of Parts



1. Temperature control dial
2. Removable glass shelf
3. Crisper glass cover
4. Vegetable crisper
5. Rod
6. Evaporator

The refrigerator you've purchased may slightly differ from the one in this manual. However, the functions and operating methods will not change.

Please remove all adhesive tape before use.

Don't use force to pull or push the drawers or balconies, doing so may result in damage.

Temperature controls can be adjusted as desired.

Avoid moving the drawers, baskets and shelves from the original configuration.

# Safety Warnings

To ensure your personal safety, please follow the points below:

1. The circuitry for refrigerator must be isolated. The area of cross section of wire must be larger than 0.75mm<sup>2</sup>. The power plug should have its own socket, the socket must be ground as adapter may cause the socket to overheat.
2. The voltage and frequency of this product should be 220-240V;50Hz. Contact with the local maintenance station or retailer if the wire is damaged.
3. When removing the plug from the socket, pull the plug and never the wire.
4. Do not damage the refrigerant circuit.
5. This appliance is not intended for use by persons (including children) with reduced physical, sensory or mental capabilities, or lack of experience and knowledge, unless they have been given supervision or instruction concerning use of the appliance by a person responsible for their safety.
6. Children should be supervised to ensure that they do not play with the appliance.
7. Install the appliance in a well ventilated area and clear from obstruction.
8. Before you throw away your old refrigerator or freezer.
  - Take off the doors;
  - Leave the shelves in place so that children may not easily climb inside.
9. Do not store explosive substances such as aerosol cans with a flammable propellant in this appliance. This appliance is intended to be used in household and similar applications such as
  - staff kitchen areas in shops, offices and other working environments;
  - farm houses and by clients in hotels, motels and other residential type environments;
  - bed and breakfast type environments;
  - catering and similar non-retail applications.
10. Do not use electrical appliance inside the food storage compartments of the appliance, unless they are of the type recommended by the manufacture.
11. This appliance can be used by children aged from 8 years and above and persons with reduced physical, sensory or mental capabilities or lack of experience and knowledge if they have been given supervision or instruction concerning use of the appliance in a safe way and understand the hazards involved. Children shall not play with the appliance. Cleaning and user maintenance shall not be made by children without supervision.

Children aged from 3 to 8 years are allowed to load and unload refrigerating appliances.

To avoid contamination of food, please respect the following instructions:

-Opening the door for long periods can cause a significant increase of the temperature in the compartments of the appliance.

-Clean regularly surfaces that can come in contact with food and accessible drainage systems.

-Clean water tanks if they have not been used for 48 h; flush the water system connected to a water supply if water has not been drawn for 5 days.

-Store raw meat and fish in suitable containers in the refrigerator, so that it is not in contact with or drip onto other food.

-Two-star frozen-food compartments are suitable for storing pre-frozen food.

-One-, two- and three-star compartments are not suitable for the freezing of fresh food.

-If the refrigerating appliance is left empty for long periods, switch off, defrost, clean, dry, and leave the door open to prevent mold developing within the appliance.

**WARNING:** When positioning the appliance, ensure the supply cord is not trapped or damaged.

**WARNING:** Do not locate multiple portable socket -outlets or portable power supplies at the rear of the appliance.

**NOTICE:**

1. Do not expose to open flames, gas or other harmful substances

2. Don't splash water on the rear of the appliance, for it may cause malfunction or electric shock.

3. Don't store flammable materials such as ether, benzene, LP gas etc.

4. It is better not place objects on the top of appliance which is magnetic, heavy, or filled with water.

5. The refrigerant of this product is R600a, which is inflammable. So, make sure not to damage the cooling system during the transportation and installation.

6. **DISPOSAL:** For safe disposal contact a WEE waste removal company local to your area



# Installation Instructions

1. The refrigerator should be located in a completely flat surface, leave 5~10 cm between each side of the appliance and the wall, and leave 30 cm between the top of the appliance and the ceiling.

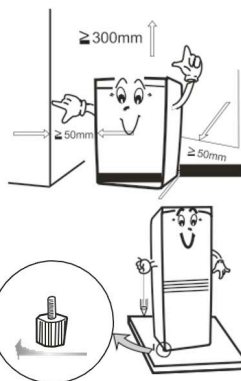
2. Choose a location which is not exposed to sunlight, high temperature or humidity, as humidity may cause stain.

3. Pulled out the bottom panel before installation.

4. The appliance can be adjusted by rolling its two legs in front when it is unstable. Rolling in clockwise can rise up the machine.

5. The location should be firm and flat. An un-secure position may cause noise and vibration:  
(a) The noise may be increased if the floor is not firm.  
(b) Put a sheet under the appliance for solving the heat emission if you need to locate it onto a carpet.

6. Make sure the adjustable legs are clung to the floor, and set the appliance slope backward slightly for keeping the doors closed tightly.



# Operation Instructions

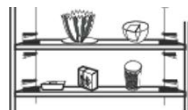
## PLACEMENT OF FOOD


There should always be some space between items inside for air circulation.

2. Food should be kept in sealed package to avoid becoming dry or with odour.

3. Hot food should be cooled down before placing into the appliance. Otherwise, interior temperature and electronic consumption will increase.

4. Reducing the frequency of door opening can efficiently lower the electronic consumption.



 **Warning** Do not use any electronic equipment inside the appliance.

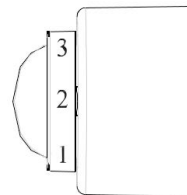
## Use Method and Precautions of Different Compartments

### TIPS FOR USE OF REFRIGERATOR COMPARTMENT

1. The common refrigerating temperature of food stored in refrigerator is from 4°C to 8°C. In this environment, cooked meat can not be stored for more than 4 days, and fruits and vegetables should not exceed one week at most.
2. Raw food and cooked food need to be stored in different containers. In order to prevent bacterial contamination, raw vegetables and fruits should not be exposed to raw meat or fish. Vegetables and fruits should be wrapped by film and stored in the crisper.

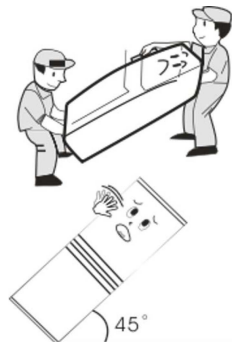
### INSTRUCTIONS FOR USE

The temperature of refrigerator can be controlled manually by the knob. However, the number shown on the knob does not directly represent the temperature. Instead, the larger the number is, the lower the interior temperature will be. 0 stands for off. 7 stands for the coldest temperature level. The temperature in every apartment will be at the lowest degree under this level, and it probably make it below 0 °C in the fridge department, so please choose carefully before you use. Turn the knob to level 4 when it is normal, turn it to the level 4-6 if a lower interior temperature is required; contrarily, lower to 4-1, when a higher one is needed.



## Packing and Moving

1. Unpack , repack and carry  
Please memorize the position of each accessory of the appliance when packing, repack the product and check it carefully before transportation.
2. Do not lift or pull the door or the door handle during transportation.
3. When moving, the appliance do not position over 45 degrees (the angle to the vertical direction). Please avoid strong vibration during transportation.





# Maintenance

The appliance should be maintained and cleaned frequently. For your safety, pull the plug out of the socket before cleaning.

## 1. Interior maintenance

Clean the interior of the appliance with clean water or neutral soap. Scour it with clean water and wipe it with a piece of dry cloth.

## 2. Maintenance of door gasket

It is easy to damage if the door gaskets are polluted by the stain like oil, sauce and etc., so it is better to clean them carefully.

## 3. Outer maintenance

Wipe the dust with a piece of dry cloth, clean it with neutral soap if necessary.

4. The appliance is equipped with a screwing lamp or a long life LED interior light. (Screwing lamp can be replaced by professionals. Long life LED is non-replaceable.)

# Defrost

Heavy frost will influence the refrigerating capacity of the appliance and increase the energy consumption. Thus, defrosting is needed when the frost reaches 5 mm. Processes of the manual defrost are listed as following: take all the food out of the compartment; uninstall the drawers and shelves; unplug the electronic power cord; open the doors and wait for the thaw; wipe up the water with dry cloth.



Do not use any other equipment or method to push the defrost process. It may destroy the cooling system.

# Disconnecting the Appliance

After power failure, even in summer, the refrigerator can store food normally for several hours.

## 1. Discontinuation during power failure

After power failure, do not put additional food in the appliance and reduce the frequency of door opening.

## 2. Discontinuation during vacation

Remove the easily rotten food from the fridge before short vacation. After confirmation, close the door firmly. For a long vacation, please remove all the food and cut off the power. After defrosting, clean up the liner of the appliance and wipe it dry, and leave the door open.

## 3. Stop using

If the refrigerator is not in use, please unplug the outlet and clean up the appliance. The door should be kept open in order to prevent unpleasant smell caused by food remnants as well as a stop mold from growing.



Attention

Under general condition do not stop and restart the appliance frequently. After switching off the power, please leave at least 5 minutes before resumption.

# User Notifications

1. Do not splash water on the refrigerator, as it will cause oxidation and malfunction.

Electronic component such as on/off button should be wiped dry.

2. Cleansers such as soap powder, abrasive cleaning powder, alkali cleansers, chemical cloth, alcohol, acid petroleum product and hot water should not be used to

clean the refrigerator as they may damage the painted cover and plastics.

3. Smear can damage the interior plastic component, so wipe it as soon as possible.

4. Please check the points below after maintenance:

(1) Is there any damage or loss of the electronic wire?

(2) Can the plug be put in the socket reliably and smoothly?

(3) Is the plug heating unconventionally?



Warning

Please get rid of the gasket of the door before the disposal. The disposed apparatus should be handled by professional staff, as it may be harmful to the environment.

# Troubleshooting Tips

## 1. The refrigerator does not work

It may not be connected to the power supply (plug, power cut or fuse); Voltage is too low.

## 2. The refrigerator does not work efficiently as expected

It may be caused by heavy frost, or by warm temperature setting, or by frequent door operation.

## 3. It makes an unusual noise

It may be caused by imbalance or loose ground, or by resonance between the appliance and other ambient objects.

## 4. The compressor keeps working for a long period

The environment temperature may be too high. The doors may be opened frequently or even they are left open. The temperature control knob setting in (4-7) level may increase the working time of compressor.

## 5. Odour

Food with strong odour should be packed tightly before being put inside the appliance. Please check whether there is any deteriorated item or whether the liners are left dirty for a long time.

## 6. Water leaks from the bottom of the refrigerator

The drain tube is jammed. Please use a proper tool to fix the problem.

## 7. Heavy frost occurs on the rear of the appliance

Putting humid or hot food into the appliance may cause this problem. Or it may be caused by the heavy environment moisture.

The following examples are not malfunctions

1. Moisture may form dew on the outer surface of the product during the humid season.

2. The flow of refrigerant through the pipeline coil can cause a noise.

3. It is normal that the sides of product get warm as a result of the cooling pipeline working.

4. The frame of the appliance will be warm during working by the defrost pipeline inside it

Please check the above points first. If the supply cord is damaged, it must be replaced by the manufacturer, its service agent or similarly qualified persons in order to avoid a hazard

# Specifications and Parameters

Climate class		SN/N/ST/T
Electric shock protection type		I
Capacity (L)	Freezer	—
	Refrigerator	117
Voltage (V)		220-240
Frequency (Hz)		50
Current (A)		0.5
Voice [dB(A)]		≤ 42
Energy consumption (kWh/y)		130
Refrigerant		R600a/20g
Interior temperature (°C)	Freezer	—
	Refrigerator	0~8
Dimension (mm)	Width	552
	Depth	545
	Height	900

## Packing List

Parts	Number
Vegetable crisper	1pcs
Crisper glass cover	1pcs
Glass shelf	2pcs
Door bar	3pcs
Owner's manual	1 copy

**Note: Products are subject to improve from time to time, any changes in parts without further notice.**

## **INSTALL THE HANDLE - IF HANDLE IS NOT ALREADY INSTALLED**

1. Take out accessory from packing bags: one handle, one handle cover, four screws and one socket head wrench.
2. Prepare a cross screwdriver.
3. Remove the screw hole sealing tape on the door.



Handle Base



Handle Cover

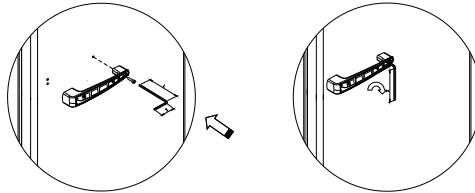


Screw



Socket Head Wrench

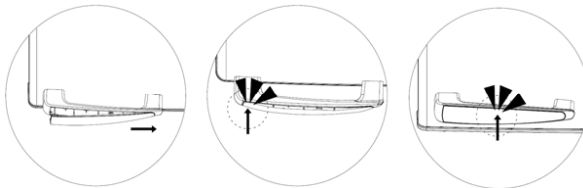
4. Make sure the three screw holes in the handle are aligned with those in the door, and then respectively screw them together. The right side one is suggested to be preferred to be screwed down.



5. Install handle cover on the handle.

Tips for the Steps to Install:

- (1) Buckle the handle cover on the right side first.
- (2) Buckle the handle cover on the left side.
- (3) Buckle the middle part of the handle cover tightly in the end. And a click can be heard if the handle cover is properly installed.



## WARRANTY

- 1.1 In this warranty:
- 1.1.1 Australian Consumer Law means the law as set out in Schedule 2 of the Competition and Consumer Act 2010;
  - 1.1.2 **Company** means GSM Retail Australia Pty Ltd ABN 53 007 682 475 of 142-144 Fullarton Road, Rose Park SA 5067. Telephone 1300 373 199. Email [admin@gsmretailgroup.com](mailto:admin@gsmretailgroup.com);
  - 1.1.3 **Consumer** means a “consumer” as that term is defined in Section 3 of the Australian Consumer Law as the original purchaser of a Mistral product;
  - 1.1.4 **Consumer Guarantees** means the guarantees under the Australian Consumer Law;
  - 1.1.5 **You** means the Consumer.
- 1.2 Nothing in this warranty affects any person’s rights under the Australian Consumer Law. The benefits to any Consumer under this warranty are in addition to the rights and remedies available under any Consumer Guarantees.
- 1.3 Subject to the other clauses of this warranty, the Company warrants to the Consumer that the Mistral product will be free of manufacturing defects and will perform to the Company’s specifications.
- 1.4 The benefit of this warranty extends only to the Consumer as original purchaser of a Mistral product which is installed in a domestic household area.
- \*The in Home warranty does not apply to Commercial and or industrial usage. \*Please See 1.7.7 for additional information*
- 1.5 This warranty commences on the date of purchase of the Mistral product by the Consumer and continues for the benefit only of the Consumer until the expiry of One (1) year (**Warranty Period**)
- 1.6 If within the Warranty Period a manufacturing defect is discovered in the Mistral product or it fails to perform to the Company’s specifications as a result of some defect in materials, components or workmanship (Defect) then the Company will, at its option, repair the Mistral product or supply a replacement Mistral product free of charge. A replacement Mistral product may differ from the original product purchased by the Consumer.
- 1.7 This warranty will not apply to any Mistral product:
- 1.7.1 Installed by any person other than a qualified tradesperson; or
  - 1.7.2 Subjected to misuse, neglect, negligence or accidental damage; or
  - 1.7.3 Operated in any way contrary to any operating or maintenance instructions; or
  - 1.7.4 Improperly handled, installed or maintained; or
  - 1.7.5 Altered or modified prior to or after installation; or
  - 1.7.6 Damaged directly or indirectly by power surges, electrical storm damage or connection to incorrect power supply
  - 1.7.7 Industrial and or Commercial usage is inclusive of staff areas in office/ shop environments, hotel/ motel or other similar accommodation or rental type properties including Bed and Breakfast establishments.

The Australian Consumer Law requires the inclusion of the following statement with this warranty:

***Our goods come with guaranteed that cannot be excluded under the Australian Consumer Law. You are entitled to a replacement or refund for a major failure and for compensation for any other reasonably foreseeable loss or damage. You are also entitled to have the goods repaired or replaced if the goods fail to be of acceptable quality and the failure does not amount to a major failure.***

- 1.8 You must provide proof of your purchase of the Mistral product and the date of purchase in order to obtain the benefit of this warranty.
- 1.9 If you live outside the service area of the Company or one of its service agents, this warranty does not cover the cost of transport of the Mistral product for service nor the service agent's traveling costs to and from your home.
- 1.10 If you are required to transport the Mistral product to the Company or its service agent, you must ensure it is safely disconnected by a qualified tradesman and securely packed and insured. The Company does not accept any responsibility for loss or damage of the Mistral product prior to it being received by the Company or its service agent.
- 1.11 You will be responsible for all costs of returning a Mistral product to the Company and for redelivery of the Mistral product by the Company (whether it is the original or a repaired and/or a replacement Mistral product) and for any other expenses you incur in claiming under this warranty.
- 1.12 The Company or its service agent will examine any Mistral product and if the Company determines that it is defective through no fault of the Owner and is otherwise undamaged, the Company will repair or replace the Mistral product in accordance with this warranty.

**DO NOT SEND IN THIS WARRANTY**

Fill out the following details and file with your purchase invoice.

**RETAIN & FILE WITH YOUR RECEIPT**

Your Purchase Receipt/Invoice is proof of date of purchase. If you are unable to establish the date of purchase, or if the fault is not covered by this warranty, or if the product is found to be in working order, you will be required to bear all service call charges.

GSM Retail Australia Pty Ltd reserves the right to discontinue items, modify designs and change specifications without incurring obligation.

Whilst every effort is made to ensure that descriptions, specifications and other information in this publication is correct, no warranty is given in respect thereof and the company shall not be liable for any errors therein.

Purchased from:

Co. Name:

Address:

Date of Purchase:

Serial number:

NOTE: Consistent with our continuing product development policy, improvements may have been made which render the contents of this packaging slightly different to that shown.

**For Warranty and technical queries: Australia 1300 373 199  
: New Zealand 0800 764 912**

